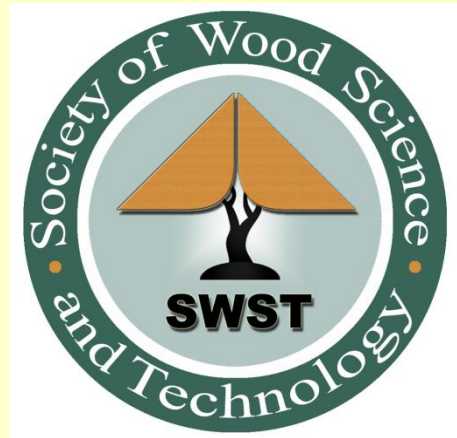


SWST Newsletter

• December 2010 •



In This Issue (these are clickable links)

News

[SWST 2014 Int'l Convention – Call for Proposals](#)

[Rosen to Chair RNRF](#)

[In Memoriam: John Haygreen](#)

[UNECE/FAO Mtg – Forests in a Green Economy](#)

Meetings

[AWPA Student Poster Competition](#)

[Wood Composites Symposium](#)

Positions

[Wilhelm Klauditz Fellowship](#)

[GRAs at UNB](#)

[Shop teacher near DC](#)

[Scientist at NIFA](#)

[Asst. Prof at Oregon State](#)

[GRA at LSU](#)

[GRA at Auburn](#)

[Masters at UBC](#)

SWST

[Business Meeting Minutes from Geneva](#)

[About SWST](#)

[Visiting Scientist List](#)



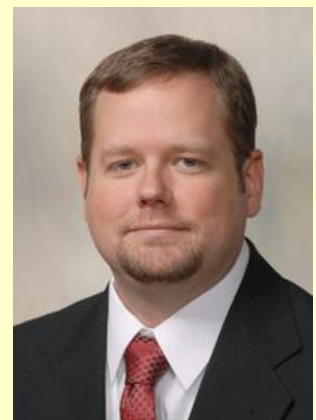
[Adam Taylor](#)

Note from the Editor

This will be my last Newsletter. [Dr. David Jones](#) will be taking over as editor for the next issue due out in February 2011. Please send contributions to David by the end of January to pdjones@ext.msstate.edu

It's been a pleasure to edit the newsletter over the past few years. Thanks for everyone for their contributions.

-Adam



[David Jones](#)

[\(BACK\)](#)

SWST 2014 INTERNATIONAL CONVENTION - CALL FOR PROPOSALS

SWST is issuing a Call for Proposals for co-hosting our 2014 International Convention. We will be holding it outside of North America and any interested person, company, or university that would like to co-host in their city please submit a proposal and contact Vicki Herian at SWST:

P.O. Box 6155
Monona, WI 53716-6155
PH: 608-577-1342
Fax: 608-467-8979
Email: vicki@swst.org.

[\(BACK\)](#)

HOWARD ROSEN ELECTED CHAIRMAN OF THE RENEWABLE NATURAL RESOURCE FOUNDATION (RNRF) BOARD OF DIRECTORS

RNRF had its annual meeting on November 3, 2010 at Rockwood Manor in Potomac, Maryland. At this meeting, Howard Rosen, SWST Board Member, was elected Chairman of the Board. SWST has been a member of RNRF since 1994. RNRF is an organization dedicated to the advancement of interdisciplinary science, understanding, and stewardship of renewable natural resources by fostering interdisciplinary activities and synergy among professional, scientific, and educational organizations, and through public education. The mission of SWST is complemented by these collaborative activities of RNRF.



Barry Starke (right), Board Member for the American Society of Landscape Architects, turns over the job of Chairman of the Board to Howard Rosen

[\(BACK\)](#)

IN MEMORIAM: JOHN HAYGREEN

Dr. John Grant Haygreen, 80, of Auburn, Alabama died October 21, 2010 at East Alabama Medical Center. John is survived by his wife Elizabeth, of 58 years; son, Jim and his wife Janice, of Loxley, AL; daughter, Lisa Nelson, and her husband John of Lewes, DE; Grandchildren John Haygreen of Auburn, AL, Alden Nelson, and Ryan Nelson of Lewes, DE. One brother, Jim Haygreen his wife Charlotte of South Carolina. John was preceded in death by one son, Mark Haygreen.

Haygreen received a B.S. in forestry from Iowa State University, and M.S. and Ph.D. degrees in wood science and technology from Michigan State University. John was Head of of the Department of Forest Products at the University of Minnesota from 1971 to 1984, having served previously on the faculties of Colorado State University, Michigan State University, and the University of Minnesota. He retired from Auburn University in 1990 as Associate Dean of Forestry.

Dr. Haygreen was President of the Society of Wood Science and Technology and of the Forest Products Society, and active in many other professional organizations including the American Society for Testing of Materials. He was also an elected fellow of the International Academy of Wood Science. He was a demanding yet beloved teacher, counselor to many, frequent consultant, and prolific author. John authored numerous scientific articles focused on wood mechanics, wood drying, and wood utilization, and co-authored a widely used wood science textbook. Consulting and volunteer activities took him frequently to Europe, Central America, and Southeast Asia.

John was active in his church for many years, donating time to the food bank and other community projects. He was an avid golfer and enjoyed time at the beach. He was loved and will be greatly missed.

In lieu of flowers, the family requests donations to the local Food Bank of your choice. Alabama Funeral Homes & Cremation Centers of Dadeville, AL are in charge of the arrangements.
www.alabamafuneralhomes.com

[\(BACK\)](#)

FORESTS IN A GREEN ECONOMY

Dear Sir/Madam, dear Colleagues,

It is our pleasure to inform you that at its meeting on 15 October 2010, the joint Bureaux of the UNECE Timber Committee (TC) and the FAO European Forestry Commission (EFC) decided that the theme of the joint session of the two aforementioned bodies in October 2011 will be "Forests in a Green Economy." This special session will include discussions on concrete examples and suggested actions/recommendations in areas such as:

Sustainable Forest Management for a green, sustainable, climate-friendly economy;
Forest industry's role in green building;

Wood energy's contribution to a sustainable energy future;
Sustainable production and consumption;
Valuation of forest ecosystem services: value creation through conservation and sustainable management;
Green jobs in forestry;
Policy and institutional frameworks conducive to achieving a green economy.

The Bureaux also agreed to develop an Action Plan on the Role of the Forest Sector in a Green Economy. The Plan is intended to provide policymakers with ideas for ways and means of improving and promoting the forest sector's contribution to a green economy. It would address topics such as forest-based products, wood energy, sustainable forest management, valuation of ecosystem services, green building, and institutional and policy incentives.

The joint session of the TC and EFC will provide an opportunity for member States to consider relevant recommendations for action and develop a regional perspective that could facilitate national implementation and global dialogue. Such an Action Plan could also provide a concrete contribution to the discussion on the green economy taking place during the Rio+20 Earth Summit in 2012.

To ensure that the Plan is fully inclusive, the Bureaux suggested that member States, intergovernmental organizations, non-governmental organizations, the private sector and academic institutions be contacted to provide input. Therefore, we are pleased to contact you in order to seek your input to the following three questions and your assistance in consulting on these issues within your Government, institution or organization.

Questions for the Action Plan on the Role of the Forest Sector in a Green Economy

What are the main topics the Action Plan should address?

For each topic, what should be the main objectives for increasing the role of the forest sector?

For each objective, what are the main actions (already taken and/or required) to increase the role of the forest sector in achieving a green economy?

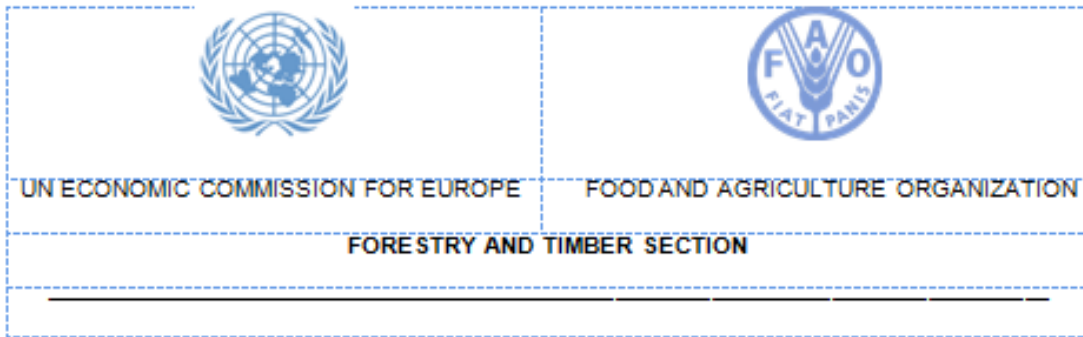
We would be grateful if you could use the attached form to provide your input and e-mail it direct to paola.deda@unece.org , **no later than 15 January 2011** , and include the words "Action Plan" in the subject line. The first draft of the action plan will be developed during the first quarter of 2011 and reviewed during an informal consultation meeting open to all stakeholders on 18-19 April 2011 in Geneva.

Should you need more information on the work of the Timber Committee, the European Forestry Commission or the process to prepare the Action Plan, please do not hesitate to contact Paola Deda at the address above or by phone at 0041 22 917 2553.

We look forward to receiving your input and thank you once again for cooperating with us on this important project.

Yours sincerely,

Linda Langner , Chairperson, UNECE Timber Committee
Peter Blomback , Chairperson, FAO European Forestry Commission



Action Plan on the Role of the Forest Sector in a Green Economy

TEMPLATE FOR RESPONSE TO UNECE/FAO ENQUIRY
 Please e-mail this form filled out to paola.deda@unece.org

Name of Respondent:

Organization:

Please check the appropriate box to describe your affiliation:

ECE member state (Pls specify Ministry/Agency)

Intergovernmental organization Non-governmental organization

Industry Association Private Sector Academic organization

Contact Information:

Main Topic for Action Plan	Objectives for Topic	Actions for Accomplishing Objective

[\(BACK\)](#)

AMERICAN WOOD PROTECTION ASSOCIATION

2010-2011 Executive Committee:

Richard J. Ziobro, *Chair*
Edward D. Williams, Jr., *Vice Chair*
Bessie M. Woodward, *Past President*
William Abbott
Roger A. Babb
Chris Barber
James D. Hickman
Michael Johnson
Pascal Kamdem
Kenneth R. Laughlin
Susan Thomason



Corporate Office:

100 Chase Park South Suite 116
Birmingham, AL 35244-1851

Telephone: 205-733-4077
Facsimile: 205-733-4075

Mailing Address:

PO Box 361784
Birmingham, AL 35236-1784

E-mail: email@awpa.com
Website: www.awpa.com

2010-2011 Officers:

Richard J. Ziobro
President
Edward D. Williams, Jr.
First Vice President
Kenneth R. Laughlin
Second Vice President
Chris Barber
Third Vice President
Randy Deweese
Treasurer
Colin McCown
Executive VP & Secretary

SCHOLARSHIP OPPORTUNITY - STUDENT POSTER COMPETITION

November 2010

To all Academic Institutions with Interest in Wood Protection:

The American Wood Protection Association (AWPA) is announcing a poster competition for students in which \$1,200 USD will be awarded to the best two posters (\$800 for the winner, and \$400 for the runner-up). The 2011 AWPA Scholarship is named in memory of Mrs. Mary L. Hall, AWPA's Administrator from 1991 to 2003. The posters will be judged at AWPA's 107th Annual Meeting in Fort Lauderdale, Florida on Monday, 16 May 2011. Rules and deadlines are as follows:

- Posters must be related to the field of wood protection.
- The deadline for entry is 14 January 2011. A preliminary title and list of authors for each poster must be submitted at this time.
- Final title, list of authors, and brief abstract (200 words or less) must be received by AWPA on or before 18 March 2011.
- Posters must be printed on a single sheet of paper measuring not more than 48 inches in height and 96 inches in width. Free-standing mounting boards will be provided by AWPA.
- Poster authors are not required to be present at the meeting, but attendance is encouraged.
- If authors or their representative(s) cannot attend, posters must be shipped to AWPA on or before 29 April 2011. All late posters are subject to disqualification.
- Any posters not picked up by the end of the conference will be discarded.
- The posters will be judged by a panel of four qualified AWPA members primarily on the basis of relevance, scientific rigor, and clarity of presentation.

Please thoughtfully consider participating in this event. If you have any questions or need additional information, please contact Colin McCown at AWPA using the information in the letterhead above.

[\(BACK\)](#)

INTERNATIONAL WOOD COMPOSITES SYMPOSIUM & INTERNATIONAL SYMPOSIUM ON VENEER PROCESSING AND PRODUCTS

Joint International Symposium on Wood Composites & Veneer Processing and Products

APRIL 5-7, 2011

Bell Harbor International Conference Center & The Edgewater Hotel

Seattle, Washington

This joint meeting represents a combination of WSU's long-standing International Wood Composites Symposium along with the biannual International Symposium on Veneer Processing and Products. The Joint Symposium is co-sponsored by Washington State University, APA - The Engineered Wood Association, and FPInnovations.

Agenda Topics of the Joint Symposium

- * Raw material availability
- * Life cycle assessment
- * Fiber, strand, and veneer processing
- * Particleboard, MDF, OSB, Plywood, and LVL Manufacturing
- * Specialty products
- * Equipment and resin technology
- * Product performance and standards
- * Market and trade issues
- * Integrated technologies

Call for Papers and Posters

Abstracts for oral presentations should be submitted by November 15, 2010, to Vik Yadama, vyadama@wsu.edu [<mailto:vyadama@wsu.edu>].

Submit poster abstracts electronically at www.woodsymposium.wsu.edu by February 28, 2011.

Be a Sponsor

Thank you Chem-Trend for your sponsorship at the platinum level

Thank you GreCon for your sponsorship at the silver level

Three levels of sponsorship available:

PLATINUM \$5,000

2 registrations for your company

Display table space during Symposium Wednesday and Thursday

GOLD \$2,500

1 registration for your company

Display table space during Symposium Wednesday and Thursday

SILVER \$1,000

Company participants must register for Symposium

Display table space during Symposium Wednesday and Thursday

All Sponsorships:

Company name and logo on website

Company name and logo on Symposium printed materials and emails

Company name and logo on signage during Symposium

Companies, organizations and individuals are invited to sponsor. Your sponsorship can be reserved for a specific event, such as a coffee break, breakfast, lunch, banquet, etc.

~~~~~  
Who Should Attend

- \* Company CEOs
- \* Plant Managers
- \* Technical directors
- \* Quality control personnel
- \* R & D personnel
- \* Distributors
- \* Suppliers
- \* Scientists and Educators
- \* Engineers and Consultants

~~~~~  
Benefits for You and Your Company

- * Hear industry leaders identify key global trends, challenges, and opportunities
- * Network with people you want to meet in industry and research
- * Exchange ideas and discuss new developments in processes and products
- * Learn about new technology in MDF, particleboard, OSB, plywood, and LVL manufacturing

~~~~~  
Registration Fees

Symposium April 5 - April 7, 2011

Early registration (deadline March 15): \$595

After March 15: \$695



ee includes abstracts notebook, Tuesday reception, Wednesday and Thursday continental breakfasts, Wednesday and Thursday lunches, refreshments, and the full proceedings on CD mailed to each participant after the symposium.

Register online beginning December 1: [www.woodsymposium.wsu.edu](http://www.woodsymposium.wsu.edu)

---

#### Meeting and Hotel Information

Bell Harbor Conference Center

2211 Alaskan Way, Pier 66

Seattle, WA 98121 USA

206-441-6666 Phone

888-772-4422 Toll free phone

206-441-6665 Fax

[www.bellharbor.com](http://www.bellharbor.com)

The Edgewater Hotel

2411 Alaskan Way, Pier 67

Seattle, WA 98121 USA

206-728-7000 Phone

800-624-0670 Reservations

206-441-4119 Fax

[www.edgewaterhotel.com](http://www.edgewaterhotel.com)

---

For More Information

Sponsorship Information:

Vik Yadama, Organizing Committee

Washington State University

509-335-6261 or 509-335-2262 Phone

[vyadama@wsu.edu](mailto:vyadama@wsu.edu) [<mailto:vyadama@wsu.edu>]

Steve Zylkowski, Organizing Committee

APA - The Engineered Wood Association

[steve.zylkowski@apawood.org](mailto:steve.zylkowski@apawood.org) [<mailto:steve.zylkowski@apawood.org>]

Program Information:

Vik Yadama, Organizing Committee

Washington State University

509-335-6261 or 509-335-2262 Phone

[vyadama@wsu.edu](mailto:vyadama@wsu.edu) [<mailto:vyadama@wsu.edu>]

Robert Tichy, Organizing Committee

Washington State University

[bobtichy@msn.com](mailto:bobtichy@msn.com) [<mailto:bobtichy@msn.com>]

[http://campaign.r20.constantcontact.com/render?llr=hl8d85cab&v=001bNaaDsMZRRRe6bH-c1lDiaisLvByKnVzzhP8Wrk13bzOaFSmn7cpfVZGuI4gTTheBf5ZduzMY\\_nTX1ZUTkvqbWgTITyVgj7tWU7BXZ83-iX9d6jH5c89aZZNELdebH-Z6ZGtir1D41jgkpHZrqlSU69YJNVr6zedx\\_b3\\_aRi8X6gTTVklUO1leP6u1zk7B\\_u\\_fAEMWalh8G7y0RtYPO3pEYxdB\\_0vYsAUcipArcKT5\\_rL85DadvyOiac5EeCBsnQYS1CvIPsaTZsEV3-nTa5X-t3-c84yuYpmZvstqHpVPZKyqwDnh-WJFz3J0pTNjayCgdQq JspeG\\_HfKtUaCcMaMTf5cZ0sun9Eikcu4Ka1a4%3D](http://campaign.r20.constantcontact.com/render?llr=hl8d85cab&v=001bNaaDsMZRRRe6bH-c1lDiaisLvByKnVzzhP8Wrk13bzOaFSmn7cpfVZGuI4gTTheBf5ZduzMY_nTX1ZUTkvqbWgTITyVgj7tWU7BXZ83-iX9d6jH5c89aZZNELdebH-Z6ZGtir1D41jgkpHZrqlSU69YJNVr6zedx_b3_aRi8X6gTTVklUO1leP6u1zk7B_u_fAEMWalh8G7y0RtYPO3pEYxdB_0vYsAUcipArcKT5_rL85DadvyOiac5EeCBsnQYS1CvIPsaTZsEV3-nTa5X-t3-c84yuYpmZvstqHpVPZKyqwDnh-WJFz3J0pTNjayCgdQq JspeG_HfKtUaCcMaMTf5cZ0sun9Eikcu4Ka1a4%3D)

[\(BACK\)](#)



**Fraunhofer**  
WKI

Fraunhofer Institute for Wood Research, Wilhelm-Klauditz-Institut WKI (<http://www.wki.fraunhofer.de>) announces a Research Fellowship in all areas of wood science, technology and engineering and seeks

## Candidates for the Wilhelm Klauditz Fellowship

*The Fraunhofer Institute for Wood Research - Wilhelm-Klauditz-Institut WKI is one of 59 institutes of the Fraunhofer-Gesellschaft. As one of the leading organizations for applied research in Europe it offers ambitious scientists challenging tasks coupled with responsibility and room for creativity.*

The Fellowship is aimed to faculty eligible for sabbatical leave who want to pursue world-class applied research at the Fraunhofer WKI.

In exceptional cases, candidates with PhD degree seeking to continue their doctoral work will be considered. The Wilhelm-Klauditz-Institut is a part of the Fraunhofer-Gesellschaft (<http://www.fraunhofer.de/en/>).

The Fellowship will cover travel expenses to and from Braunschweig, Germany (<http://www.braunschweig.de/english>) and a stipend of up to 36,000 Euros (gross) per year (no health and retirement benefits are provided to foreign candidates). Office and laboratory space for the proposed research will be provided.

Interested candidates are encouraged to submit the following documents:

- Current resume with the list of publications and research accomplishments
- Short, max. one page pre-proposal describing the research to be conducted at WKI and expected results
- Requested duration of the stay (min 6 Mo)

Selected candidates will be asked to submit full proposal and three letters of recommendation. The proposals can be in any area of the applicant's interest (not necessarily areas currently covered by the Institute) and must contain link to potential applications or research implementation. Research proposals in the areas of but not limited to wood composite materials, natural materials based high strength cellulose or carbon fibers, and novel materials and technologies are of a particular interest.

Applicants are encouraged to review the WKI web site for information about the facilities available at the Institute and are expected to conduct independent research while at WKI. Reasonable research and travel budgets will be provided by the Institute.

Application deadline (pre-proposals) is January 30, 2011. Applications should be sent to

**Prof. Dr. Ing. Bohumil Kasal, Director, Fraunhofer WKI,  
Bienroder Weg 54E, 38108 Braunschweig, Germany,  
or via Email to [wk.fellowship@wki.fraunhofer.de](mailto:wk.fellowship@wki.fraunhofer.de)**

[\(BACK\)](#)

## **NSERC FUNDED PH.D. RESEARCH OPPORTUNITIES IN THE AREA OF SENSING TECHNOLOGIES FOR THE FOREST PRODUCTS INDUSTRY**

Several **Ph.D.** opportunities are available for outstanding scholars within a NSERC Strategic research program on *the use of sensors in the wood industry* that is developed in University of New Brunswick (Fredericton, Canada) in collaboration with University of Toronto, Nagoya University and FPIInnovations for the following specific research topics:

1. Ph.D.#1 "*Modelling of the influence of view and surface conditions on near-infrared spectra measured over wood based on Tsuchikawa's model*" under the supervision of B. Leblon (UNB), S. Tsuchikawa (Nagoya U.), R. Stirling (FPIInnovations) and M. Defo (FPIInnovations)
2. Ph.D.#2 "*Hyperspectral imaging system for log moisture and density measurements*" under the supervision of B. Leblon (UNB), P. Cooper (U of Toronto), K. Groves (FPIInnovations) and T. Trung (FPIInnovations)
3. Ph.D.#3 "*Near-infrared transmittance device for log moisture and density measurements*" under the supervision of B. Leblon (UNB), S. Tsuchikawa (Nagoya U.) and T. Trung (FPIInnovations)

For each Ph.D. position, the applicant must have a M.Sc. degree in science, forestry, wood science, engineering or the equivalent from a recognized university. He/she must have at least a 3.0 GPA to apply. Each Ph.D. student will get full funding at the [Natural Science and Engineering Research Council \(NSERC\)](#) level.

Applications (CV, list of publications, and name of three referees) and questions should be emailed before **December 15, 2011** to Prof. Dr. B. Leblon ([bleblon@unb.ca](mailto:bleblon@unb.ca))

[\(BACK\)](#)

## **WOODWORK/SHOP TEACHER (TECHNOLOGY ENDORSEMENT) ALEXANDRIA CITY PUBLIC SCHOOLS**

8 miles from Washington, D.C.

Teach, supervise, and evaluate students, meet and instruct assigned classes, maintain accurate student record, and utilize classroom technology.

- Deliver instruction in a modular lab that will allow middle school students to explore the basic elements of technology and culture, technological foundations (design, illustration, energy and power, electronics, and materials science), technological processes (technical design, material processing, manufacturing, construction, and graphic communication) and technological systems (communication, production, and transportation systems).
- Participate in Career and Technical Education co-curricular activities as a club sponsor/advisor.

- Maintain active membership in state and national professional organizations that are tied to the instructional program (Virginia Technology Education Association).
- Troubleshoot and maintain lab equipment in collaboration with ACPS ITS representatives and lab vendors.
- Maintains compliance with all program and teacher training initiatives that are attached to Technology Education.
- Establish, manage, and administer the school based budget for Technology Education.
- Lead and work effectively with elementary and middle school faculty and counselors to recruit and maintain student participation in the program.
- Perform other duties as assigned by principal or appropriate administrator.

Qualifications:

- Experience in instructional planning, curriculum implementation, instruction and performance assessment.
- Current and valid teaching licensed strongly preferred, with an endorsement in Technology Education.
- The Technology teacher will teach introduction to technology including inventions, innovations, materials processing and technological systems.
- Possesses leadership qualities and personal characteristics necessary to work effectively with adolescents, parents, business/industry, and community groups.
- Excellent communication, organization and computer literacy skills.
- To apply visit our website at: [www.acps.k12.va.us](http://www.acps.k12.va.us) click on: "employment/jobs"

click on: "current job vacancies"

click on: "licensed"

click on: "teachers K-12"

Look for the job title: Technology Teacher job number LTE10849

[\(BACK\)](#)

## **PRINCIPAL SCIENTIST, INSTITUTE OF BIOENERGY, CLIMATE AND ENVIRONMENT**

Below is a link to a position at NIFA for the Principal Scientist, Institute of Bioenergy, Climate and Environment. This is a temporary position up to 4 years and is also being advertised as a permanent position (see the position description).

Position Description:

<http://jobview.usajobs.gov/GetJob.aspx?JobID=93840597&JobTitle=Principal+Scientist%2c+Institute+of+Bioenergy%2c+Climate+and+Environment&brd=3876&vw=b&FedEmp=Y&FedPub>

[\(BACK\)](#)



**Assistant Professor, Tenure Track  
GREEN BUILDING MATERIALS &  
ENGINEERING  
Dept. of Wood Science and Engineering  
Oregon State University, Corvallis**

The Department of Wood Science & Engineering (<http://woodscience.oregonstate.edu/>) at Oregon State University seeks applicants for a research and teaching faculty position that will advance the efficient use of renewable plant-based materials for engineering applications, buildings and/or consumer products and similar end-uses. This is a 0.75 FTE, 12-month or 1.0 FTE, 9-month tenure-track position (at the discretion of the Department Head). Incumbent is encouraged to increase his/her base appointment/salary by seeking supplemental funding through other activities outside of the approved position description. The incumbent will teach and conduct research in areas such as green building engineering, use of life cycle analysis (LCA) of materials and structures, manufacturing, and utilization strategies employing renewable materials, and/or durability and performance of engineered systems and components. This position is envisioned to take advantage of the high degree of collaboration among units across campus and elsewhere within the state. Minimum requirements include, but are not limited to, a PhD in a renewable material science, building sciences, material science, architectural engineering or related science/engineering field at the time of hire and at least twelve months of research experience. Salary is commensurate with education and experience.

To review full position details and qualifications or to apply, see <http://oregonstate.edu/jobs>, posting #0006461. For full consideration, applications must be received by January 10, 2011.

Oregon State University is located in Corvallis, a vibrant college town of 53,000 in the heart of western Oregon's Willamette Valley. Corvallis consistently ranks among the best and safest cities to live in the U.S., as well as among the most environmentally responsible. OSU is an Affirmative Action/Equal Opportunity Employer.

[\(BACK\)](#)

# DOCTORAL OR MASTERS STUDENT RECRUITMENT



## Doctoral or Masters Student Recruitment

**Gilbert Foundation Scholarship  
School of Renewable Natural Resources  
Forest Products Marketing & Business Development  
Louisiana State University**

For Fall 2011, The Louisiana Forest Products Development Center at Louisiana State University is soliciting applications for the prestigious Gilbert Foundation Scholarship. Both M.S. (\$20,000/year for 2 years) and Ph.D. (\$25,000/year for 4 years) degree candidates are encouraged to apply.

In keeping with the intent of the Foundation goals, recipients must have academic credentials that place them in the upper 5 % of applicants to the graduate program in the School of Renewable Natural Resources. Eligibility will be based on the evaluation of the grade point averages, performance on the Graduate Record Examination (verbal, quantitative, and written), letters of reference, and other tangible evidence of eligibility. The minimum qualifications for MS eligibility are an earned cumulative GPA of at least 3.00 with a 3.25 for the last 60-64 hours of work towards their undergraduate degree based on 4.00.

For the Ph.D. program, the minimum requirements include a cumulative GPA of 3.6 during the pursuit of their MS, but 3.75 if undergraduate GPAs are below the 3.00 and 3.25 GPA standards. Scores on the GRE should be at least 1200 (V + Q) with each section above 500 and a writing score of 4 or greater. Performance on the GRE will be evaluated in combination with GPA, letters of reference, and other evidence of the applicant's potential success in pursuing a graduate degree and representation of the Gilbert Foundation ideals.

Recipients are entitled to a **scholarship covering student fees. The Graduate School pays tuition and gives an allowance for medical insurance.** The recipient has a 20 hr/wk work commitment and is covered by workman's compensation insurance. We can evaluate candidates contingent on acceptance by the Graduate School. Applications are done on-line. Information can be found at: the Louisiana State University Graduate School Home Page.

<http://gradlsu.gs.lsu.edu/Prospective%20Students/item12197.html>

The Forest Products and Business Development Program offers a multi-disciplinary approach that provides students an opportunity to develop practical skills and academic depth in a variety of areas of specialization such as promotion & branding, eBusiness, certification, wood-based biofuels-bioprocessing, and forest-based economic development/policy. The research area will depend on the interests of the successful candidate.

*In addition to the on-line application process, please email me a letter of intent and interest, unofficial transcripts, resume, GRE scores (when you have them) and TOEFL score (if applicable) to [vlosky@lsu.edu](mailto:vlosky@lsu.edu). Other contact information: Dr. Richard Vlosky, Director, Louisiana Forest Products Development Center: Phone: (225) 578-4527; Fax (225) 578-4251, Address: Room 227, School of Renewable Natural Resources, Louisiana State University, Baton Rouge, LA 70803.*

[\(BACK\)](#)

## **GRA AT AUBURN**

An M.S. and Ph.D level research assistantship in wood composites may be available for the Summer or Fall of 2011. Please contact me for more information about a range of possible projects.

Current stipends are at the annual rate of \$15,540 (M.S.) and \$18,180 (Ph.D.) and tuition is waived. The cost of living is quite low which should make our stipends competitive.

For more information please contact me.

Brian K. Via, Ph.D.  
Assistant Professor  
Wood Composite Products  
School of Forestry & Wildlife Sciences  
3301 Forestry & Wildlife Sciences Building Auburn, Alabama 36849 Office Phone: 334-844-1088

[\(BACK\)](#)

## **GRADUATE RESEARCH ASSISTANTSHIP RESIN EFFICIENCY FOR NON-STRUCTURAL PANELS**

Department of Wood Science  
The University of British Columbia  
Vancouver, Canada

The Wood Composites Group at UBC has an immediate opening for a full-time Graduate Research Assistant Masters (M.Sc. or M.A.Sc.). The successful applicant will join an international research team investigating the efficacy of resin use in particleboard (PB) and medium density fiberboard (MDF) panels. This project is a collaborative effort involving the Department of Wood Science at UBC and the Department of Wood Science and Engineering at Oregon State University supported by the National Science Foundation (NSF) Wood Based Composites Center. The applicant will be based at UBC, which is the International Site of the Wood Based Composites Center, and is expected to coordinate his/her research activities with the team members based at OSU. The applicant will receive regular feedback from the technical sponsors of the WBCC member companies who declared their direct support to the project. These member companies include manufacturers of PB, MDF and resins used in these products and are keenly interested product and process improvement.

The ideal candidate will possess a good academic record and have excellent communication and analytical skills, experience in primary or wood processing, materials, mechanical, or chemical engineering, or related fields. This assistantship is funded by a Fellowship from the WBCC.



The University of BC hires on the basis of merit and is committed to employment equity. All qualified persons are encouraged to apply. In accordance with Canadian immigration requirements, priority will be given to Canadian citizens and permanent residents of Canada.

Interested persons should contact Dr. Greg Smith by email with a copy of their CV attached by November 15, 2010. All candidates applying must follow the application instructions provided at:

<http://www.forestry.ubc.ca/programs/grad/HowToApply.html>.

In order to evaluate your application quickly, it is important to initiate the application process through the above webpage as soon as possible.

Dr. Greg Smith  
Associate Professor  
Department of Wood Science  
University of British Columbia  
2424 Main Mall  
Vancouver, BC, V6T 1Z4  
Canada  
[greg.smith@ubc.ca](mailto:greg.smith@ubc.ca)

[\(BACK\)](#)

## **MINUTES FROM 53<sup>RD</sup> ANNUAL BUSINESS MEETING**

October 11, 2010  
12:00 – 13:00  
Salle XXIII  
Palais des Nations  
Geneva, Switzerland

Jim Funck, Immediate Past President, presided over the Annual Business Meeting and called it to order at 12:00. He extended thank you's from the Society to key people and groups involved in this year's meeting. These included:

United Nations Economic Commission for Europe – Timber Committee

Cooperation with SWST

Beautiful facilities

Co-chairs –

Ed Pepke – UNECE Trade & Timber Div.

Susan Anagnost – SWST

Co-chairs of various sessions

Sponsors

All those attending

Last but not least – the Society's Executive Director, Vicki Herian

He then introduced the Officers and Board Members.

President Susan Anagnost – SUNY  
President Elect – Todd Shupe – LSU  
Vice President – Alain Cloutier  
Director – Steve Quarles – U. of Cal.  
Director – Sheldon Shi – Miss. State U.  
Director – Susan Diehl – Miss. State U.  
Director – Tom Gorman – U. of Idaho  
Editor of Wood & Fiber Science – Frank Beall  
Newsletter Editor – Adam Taylor – U. of TN  
Vicki Herian – SWST Executive Director

#### Award Presentations:

George Marra Excellence in Writing – The committee this year was Steve Kelly, Chair; Kurt Bigbee, Nicole Brown, and Hongmei Gu.

**2<sup>nd</sup> place - Niels Peter K. Nielsen, Douglas J. Gardner, Torben Poulsen, Claus Felby,** “Importance of Temperature, Moisture Content, and Species for the Conversion Process of Wood Residues into Fuel Pellets”; Niels Nielsen and Douglas Gardner were present to accept the awards.

1<sup>st</sup> place - Kevin B. D. White, Thomas M. Miller, and Rakesh Gupta,

“Seismic Performance Testing of Partially and Fully Anchored Wood-frame Shear Walls”; Rakesh Gupta accepted the award, as well as the \$1000 award (which was split among the authors).

Fellow Award – Audrey Zink-Sharp – Audrey was not able to appear in Geneva, but sent her thanks.

#### Student Poster Award Participants:

**Ali Fathollahzadeh,** Processing Problems Associated with New Generation Of Laminated Lumbers in Window Industry

**Seok Sean How,** A Conceptualization in Computer Simulation of Processing Radiata Pine Finger-jointed Wood and Glued-Laminated Lumber

**Seok Sean How,** Predicting Modulus of Elasticity of Short Length New Zealand Radiata Pine Finger Joint Shooks Using Flexural Vibration Method

**Alper Kiziltas,** Development of a carrier System for Cellulose Nanofibrils (CN) in Polymer Composites

**Neil Kohan,** Nondestructive Evaluation of Wood Strand Mechanical Properties Using Near-Infrared Spectroscopy

**Anthony McTigue,** A Probabilistic Approach to the Simulation of Non-Linear Stress-Strain Relationships for Oriented Strandboard

**Yucheng Peng,** Cellulose Nanofibrils Reinforced Inorganic Wood Composites

The Student Poster Competition took place after the Business Meeting on Tuesday afternoon. The judges were: Jim Funck, Alain Cloutier, Aldo Ballerini, and Sudipta Dasmohapatra.

Winners were:

1<sup>st</sup> place: **Neil Kohan**, Nondestructive Evaluation of Wood Strand Mechanical Properties Using Near-Infrared Spectroscopy, Auburn University

2<sup>nd</sup> place: **Alper Kiziltas**, Development of a Carrier System for Cellulose Nanofibrils (CN) in Polymer Composites, University of Maine

3<sup>rd</sup> place: **Seok Sean How**, Predicting Modulus of Elasticity of Short Length New Zealand Radiata Pine Finger Joint Shooks Using Flexural Vibration Method, University of Canterbury

**DISTINGUISHED SERVICE AWARD - H. MICHAEL BARNES – “CONNECTIONS: STANDING ON THE SHOULDERS OF GIANTS” THE COMMITTEE WAS: JERRY WINANDY, CHAIR, AUDREY ZINK-SHARP, PAUL SMITH, DOUGLAS GARDNER, JIM ARMSTRONG**

1. Minutes of 2009 Annual Meeting

The Minutes of the 2009 Annual Business Meeting were published in August 2009 Newsletter. A motion was made, seconded and passed to accept the minutes.

2. President's Remarks - Jim Funck then gave the President's remarks.

“It has been a pleasure serving as president this past year and an officer for the previous three years. During that time, industry, academia, and government research and technology programs have undergone many changes. In response to those changes, the Society has gone through an extensive review of itself in order to prepare for the future. One of the primary ways we have accomplished this was through the development of the SWST Strategic Plan, which can be found on the Society's web page at SWST.org. There are three key components to that plan.

Many of the action items relate to ensuring that the Society succeeds in serving the needs of its membership, as well as the science and technology community as whole.

The Society is aggressively working to ensure that it is truly international.

Changes were made to foster an increase in membership outside North America.

Accreditation of wood science programs is being encouraged on an international level, with our first non- North American accredited university being the University of Bio-Bio in Concepcion, Chile.

We are hosting our conventions in international cities.

2008 – University of Bio-Bio in Concepcion, Chile

2010 – UNECE here in Geneva

2012 – Chinese Academy for the Wood Industry – Beijing, China (Aug 27-31)

We continue to hold the alternate year's conventions with the Forest Products Society. 2011 will be held June 22 in Portland, OR, USA

We are continuing to make changes to the hallmark publication of the Society – Wood and Fiber Science.

We have a new electronic review and publication process

We have boosted the journal's ratings

We are striving to become a truly electronic journal.

The success of the Strategic Plan and the Society as a whole of course, depends upon you. As a result, I encourage you to actively participate in the Society. If you have any comments or

questions regarding the Strategic Plan or anything else, please contact any of the officers or Board members.

I am confident that the Society is in good hands with the current officers and board members, but it will take the effort of every member to see that the Society flourishes.

I thank all of you for your participation in this convention and the Society of Wood Science and Technology.”

### 3. Executive Director's Report

#### **Current Paid Members as of 10/11/10**

|                  |            |
|------------------|------------|
| Full members     | 327        |
| Student members  | 61         |
| Retired members  | 39         |
| Emerging Full    | 10         |
| Emerging Student | <u>9</u>   |
| <b>TOTAL</b>     | <b>446</b> |

|                  |     |
|------------------|-----|
| USA members      | 273 |
| Canada members   | 58  |
| Mexico members   | 1   |
| Overseas members | 114 |

#### **Paid Members as of 6/1/09**

|                  |            |
|------------------|------------|
| Full Members     | 297        |
| Student members  | 72         |
| Retired members  | 39         |
| Emerging Full    | 9          |
| Emerging Student | <u>5</u>   |
|                  | <b>422</b> |

#### **Current Paid Subscribers as of 10/11/10**

|             |     |
|-------------|-----|
| Subscribers | 179 |
| USA         | 71  |
| Canada      | 12  |
| Mexico      | 0   |
| Overseas    | 96  |

#### **Paid Subscribers as of 6/1/09**

Subscribers 189

#### **Delinquent Members**

Delinquent members as of 10/1/10 for 2010 dues: total 67 – 27 full, 29 student, 2 retired, 6 emerging full, 3 emerging student.

Compared to delinquent members as of 6/1/09 for 2009 dues: 71 total –36 full, 32 student, 3 retired

Delinquent subscribers for 2010 as of 10/1/10: 39 total (23 USA, 2 Canada, 14 foreign)

Compared to delinquent subscribers for 2009 as of 6/1/09: 36 total (14 USA, 22 foreign)

#### **Vanguard Accounts and CD's**

The following are the account balances as of October 1, 2010. The balance in the Vanguard funds was \$96,381.8. The current balance for the Vanguard Index Fund (student poster money) is \$13,311.92. The CD balance was \$60,578.56. The savings balance is \$60,720.78.

### **Checking Account**

The balance in the checking account as of October 1, 2010 is \$92,221.67.

### **Student Poster Competition Fund History and Status**

Contributors are: APA – The Engineered Wood Association, Asian Woods Company, Balazs Zombori, California Cedar Products, Entwood LLC, FPInnovations - Forintek, Iowa State University, Louisiana State University, Mississippi State University, North Carolina State University, Oregon State University, Pennsylvania State University, State University of New York (SUNY) ESF, Virginia Tech, University of British Columbia, University of Idaho, Washington State University, and Willamette Industries.

### **2010 Annual Conference**

The 2010 International Convention will be held in Geneva, Switzerland October 11-15, 2010, at the Palais des Nations, in conjunction with the UNECE/TC meetings. The general theme is “Innovative Wood Products are the Future”. We have 98 posters and 54 speakers from 43 different countries and 5 continents. A proceedings of all the papers available at the time of the meeting has been compiled and distributed at the meeting. We will end the week with a tour of CERN, Ecole Polytechnique Federale de Lausanne (where they are working on innovative building designs with wood), and the Sauvabelin Tower. We will have a banquet on Thursday evening at the Hotel Edelweiss, ending the meeting on a typical Swiss note. There is no registration fee, but a fee will be assessed for the banquet (\$50) and tour (\$75). IUFRO Division 5 has agreed to co-sponsor this meeting and the 2012 meeting as well. Other sponsors are Maney Publishing, Centre de Recherche sur le Bois and Université Laval, FPInnovations, Surface Measurement Systems, CEI-Bois, and Schweighofer Prize. A huge “Thank You” goes out to our sponsors. Information can be found on our website at <http://www.swst.org/meetings/AM10>

### **2011 International Convention**

The 2011 Convention will be cosponsored by Forest Products Society in Portland, Oregon, June 22, 2011, at the Doubletree Hotel in Portland, Oregon.

### **2012 International Convention**

We will co-host the meeting with the International Center for Bamboo and Rattan and hold the meeting at their hotel, The ICBR Tower. The meeting will take place August 27-31, 2012. Possible Session Titles were: 1) reducing carbon emissions and the 2) energy used to convert wood products to user products and to promote 3) bio-based energy and 4) resource sustainability. Others might be: Global Trade, Fundamentals of Wood Science, Advanced

Processing, Sustainability and the Change Forest Resource. We continue to work on the planning of this meeting.

### **Miscellaneous**

SWST began selling Helmuth Resch's book on "Drying wood with high frequency electric current". The book sells for \$30 plus shipping. So far we have sold 24 copies. For each copy that is sold, SWST makes \$1.

As of October 11, 2010, the following is the status of delinquent page charges. They have been sent 2<sup>nd</sup> and 3<sup>rd</sup> email notices.

42(1) \$1000.00 Lee, et al; Seoul National University

\$1200.00 Lee, et al; Seoul National University

42(3) \$500.00 Schultz and Nicholas; Mississippi State University

\$1045.00 Kubojima et al; Forestry and Forest Products Research Institute, Japan

\$1100.00 Kamke and Kutnar; Oregon State University

42(4) has been invoiced and only 2 invoices are outstanding, even though the issue has not yet been published.

#### 4. Budget Presentation

### **FISCAL STATUS DECEMBER 31, 2009**

#### **BALANCE SHEET**

Total Assets \$305,207.75

Total Liabilities \$ 320.13

Total Equity \$304,887.62

Total Equity & Liabilities \$305,207.75

#### **INCOME STATEMENT**

|  | <b><u>2009 Budget</u></b> | <b><u>Actual 2009</u></b> |
|--|---------------------------|---------------------------|
|--|---------------------------|---------------------------|

|              |              |              |
|--------------|--------------|--------------|
| Total Income | \$162,325.00 | \$159,427.12 |
|--------------|--------------|--------------|

|                |                     |                     |
|----------------|---------------------|---------------------|
| Total Expenses | <u>\$135,180.00</u> | <u>\$108,976.48</u> |
|----------------|---------------------|---------------------|

|                 |              |              |
|-----------------|--------------|--------------|
| Budget Reserves | \$ 27,145.00 | \$ 50,450.64 |
|-----------------|--------------|--------------|

#### **Budget 2011**

| <u>Category</u> | <u>Income</u> | <u>Expenses</u> | <u>Net</u> |
|-----------------|---------------|-----------------|------------|
| W&FS            | \$102,300     | \$ 65,634       | \$36,666   |
| Dues            | \$ 26,405     |                 | \$26,405   |
| Member Services | \$ 12,225     | \$ 37,047       | \$(24,822) |

|                |           |           |            |
|----------------|-----------|-----------|------------|
| Admin Services |           | \$ 28,881 | \$(28,881) |
| Salary & Taxes |           | \$ 15,000 | \$(15,000) |
| TOTAL          | \$140,930 | \$146,562 | \$ -5,632  |

Negative Budget was presented for 2011 due to some extended member services that will be explored and it might be necessary to access some reserves.

#### Wood and Fiber Science

- New Editorial Assistant. Barb Hogan, who had been an editor at USDA FPL started on 1 September and is now editing manuscripts.
- New editor. Mike Barnes will be starting as Editor on 1 Jan 2011. I am preparing a very detailed roadmap for dealing with manuscripts. We will work together through the first quarter of 2011.
- 42/4 (Oct) will issue with 13 research papers and 2 Technical Notes (TN). We have 23 manuscripts being processed: 12 in review, 6 being revised after review, and 5 essentially completed or moving ahead to or in galley-proof.
- Below are the number of manuscripts received (minus a few that were withdrawn or not acceptable). The “+” indicates TN. Over the last four quarters, we are averaging 20 papers submitted each quarter (including TN).

(20) July: 9; Aug: 2; Sep: 9

(17) Oct: 9 + 2; Nov: 4; Dec: 1 + 1

(19) Jan: 2 + 1; Feb: 7 + 2; Mar: 7

(25) Apr: 11 + 1; May: 6 + 1; Jun: 5 + 1

(14) Jul: 3; Aug: 2 ; Sep: 8

- Publication Report (\* time to publication is: print (preprint). \*\*Includes awards pages.)

| Issue        | 41/3<br>(Jul) | 41/4<br>(Oct) | 42/1<br>(Jan) | 42/2<br>(Apr) | 42/3<br>(Jul) | 42/4<br>(Oct) |
|--------------|---------------|---------------|---------------|---------------|---------------|---------------|
| Articles     | +TN 13        | 12            | 13            | 14            | 18            | 15            |
| Pages        | 100           | 140**         | 119           | 135           | 157           | 136           |
| Ave pub (mo) | 5.6(3.5)      | 7.1(4.6)      | 5.6(4.5)      | 6.6(4.3)      | 6.4(3.8)      | 6.2(2.9)      |

- Impact Factor (same data as in Jul report; updates occur about mid-year)

|                             | 2007  | 2008  | 2009  | 5-yr  |
|-----------------------------|-------|-------|-------|-------|
| BioResources                |       |       | 1.406 | 1.426 |
| Cellulose                   | 1.406 | 1.844 | 2.156 | 2.257 |
| Holzforschung               | 0.811 | 1.278 | 1.236 | 1.329 |
| Wood Science and Technology | 0.691 | 1.460 | 1.737 | 1.611 |

|                         |       |       |       |       |
|-------------------------|-------|-------|-------|-------|
| IAWA Journal            | 0.687 | 1.000 | 0.825 | 1.123 |
| Wood and Fiber Science  | 0.555 | 0.702 | 0.654 | 0.786 |
| Forest Products Journal | 0.351 | 0.550 | 0.426 | 0.530 |

## 5. Committee Reports

- a. Accreditation – Bob Rice, Chair. All accredited schools have been notified of the requirement to send in their annual program update form. Jim Armstrong, West Virginia University, has been added to the committee and Bill Smith, SUNY, has been retained for another term. The committee unanimously approved the request made by Oregon State University to postpone the decadal review of their program until late in 2012 and to extend their accredited status until 2013.
- b. Education: Cecelia Bustos from University of Bio Bio, Chili, has become the Education Committee Chair. The education Committee organized and will judge the student poster competition at the SWST Annual Convention in Geneva, Switzerland. The judges are:
- a) Aldo Ballerini, Vice president from Universidad del Bío-Bío, Chile
  - b) Alain Cloutier, Professor from Université Laval, Canada
  - c) Jim Funk, from Weyerhaeuser
  - d) Sudipta Dasmohapatra, Assistant Professor from North Carolina State Univ.
- c. George Marra Award – winners are announced above.

### d. Membership - **Report from SWST membership committee (Oct 4, 2010)**

The membership count for SWST is as follows:

|                        | Approved           |                     | Total                 |                    |                     |
|------------------------|--------------------|---------------------|-----------------------|--------------------|---------------------|
|                        | 11/4/09 to 10/4/10 | 11/15/08 to 11/3/09 | As of October 4, 2010 | As of Nov. 3, 2009 | As of Nov. 11, 2008 |
| Non-emerging countries |                    |                     |                       |                    |                     |
| Full member            | 37                 | 27                  | 327                   | 334                | 307                 |
| Student member         | 22                 | 29                  | 61                    | 107                | 78                  |
| Retired member         |                    |                     | 39                    | 40                 | 40                  |
| Emerging countries     |                    |                     |                       |                    |                     |
| Full member            | 5                  | 9                   | 10                    | 19                 | 10                  |
| Affiliate member       |                    |                     | No longer valid       | 4                  | 4                   |
| Student                | 16                 | 6                   | 9                     | 15                 | 9                   |
| Total                  | 80                 | 71                  | 446                   | 519                | 444                 |

Here is a summary of the members based on countries:



|                  | Approved           |                     | Total                 |                    |                     |
|------------------|--------------------|---------------------|-----------------------|--------------------|---------------------|
|                  | 11/4/09 to 10/4/10 | 11/15/08 to 11/3/09 | As of October 4, 2010 | As of Nov. 3, 2009 | As of Nov. 11, 2008 |
| USA members      | 12                 | 31                  | 273                   | 348                | 317                 |
| Canada members   | 5                  | 8                   | 58                    | 61                 | 53                  |
| Mexico members   |                    | 0                   | 1                     | 3                  | 3                   |
| Overseas members | 63                 | 32                  | 114                   | 103                | 71                  |

2. The SWST Facebook is now linked to the SWST webpage. There are 77 Facebook group members as of October 4, compared to 57 on July 3.

3. An e-mail survey of three questions conducted in Apr 2010 was resent to student members. The survey results are attached at the end of this report.

4. A survey of membership payment issues was also sent out to members from emerging countries to address charge #3 for the membership committee. The survey results will be presented to the next board meeting

5. Sept-Oct 2009, announcements/letters had been sent out to the university contacts encouraging recruitment of student members.

6. Attached is a list of the new approved applicants from Nov 4, 2009 to Oct 4, 2010.

By : Dr. William Tze, SWST Membership Chair, 612-624-2383 (tel), [wtze@umn.edu](mailto:wtze@umn.edu) and Dr. Ben Dawson-Andoh, Membership Vice Chair, 304-293-8750 (tel), [bdawsona@wvu.edu](mailto:bdawsona@wvu.edu)

## Student Membership Survey 2010

The membership committee is charged to develop a plan for a phased, multiple-year transition from student to full member status. The objective of this survey is to find out if full membership payment is indeed an issue for new graduates, and if the one-year grace period that we have now is sufficient to help them remain to be a member, and if a phased transition would be a solution they find appealing.

Student members were requested to respond by e-mail to the following three questions:

Are you interested in continuing your membership after graduation?

Would one year of student-rate membership after graduation be sufficient to help you convert your membership to full members? If no, please state reasons or suggest alternative incentives that you would like to see.

Which SWST service(s) do you find most helpful and least helpful to you as a student? Please feel free to elaborate.

Out of 89 student members contacted (60 paid members and 29 delinquent members), 30 responded (27 paid members and 3 delinquent members). The response rate for paid members is 45%, while the overall response rate is 34%.

**Responses for Q1:** 29 said “yes”; 1 said “no” (because he is no longer researching wood).

**Responses for Q2:** 20 said “yes”; 11 said “no”, and the elaborations could be summarized as follows:

Unsteady/unpredictable income due to:

one might or might not be able to find a job within one year after graduation (2 responses from Canada; 1 response from Ghana);

early career and impermanent (e.g. post-doc) employment (2 responses from Canada);

No mention of financial issue but feel that post-doc should pay student member rate (2 responses from Canada), and one of the two respondents indicated that the period during which one remains a post-doc varies;

Not able to apply financial support (due to early teaching career) to pay for the (full) membership fees (1 and only response from China);

Other professional societies offered :

a longer grace period of two years (1 response from USA);

a more friendly model (1 response from Canada; referring to Forest Product Society’s phased transition from \$25 student membership to \$45 voting membership, then \$70, then \$95 before attaining the full-member rate of \$145 in year 4);

No reason provided; just suggested that after the one-year grace period, “the price may increase gradually e.g. 25%, 50%, 75%, and then full membership” (1 response from Turkey).

It is noteworthy that seven out of ten “no”s for Q2 are from Canada (there were 12 respondents from Canada). It is also noted that only one (from Iran) out of three respondents from emerging

countries said “yes” to Q2. Also for Q2, all three delinquent members said “yes”, including the one who “left” the field (mentioned in Q 1), and another one who expressed interests in paying her overdue membership renewal. So, there is no conclusion to be made about the reason of delinquency.

Alternative incentives to continue membership after graduation: Of the total 11 “no”s for Q2, four suggested a student-rate of 2 years, while one preferred 3 years, two are inclined to a phased transition, two emphasize on post-doc to be charged student rate as opposed to a fixed grace period, and the remaining two did not provide alternative solutions.

**Responses for Q3** (note: in some cases, one respondent provided more than one comment):

Helpful:

Electronic access to WFS (18 similar comments);

Hard copy of WFS (2 similar comments, one of whom also said electronic access is important);

Career and educational information on the SWST webpage (4 similar comments, two of which also pointed out that the information needs to be updated regularly);

Conference information posting on the SWST website (2 similar comments);

Newsletter (2 similar comments, one of which specified the posting of scholarship and job opportunity);

Member directory;

Resume posting;

Information sharing and announcement on the SWST webpage (1 general comment);

Online introductory tutorials;

Travel grant to attend conference;

Annual convention;

All services are benefitting (4 similar comments)

Least helpful or not working:

Hard copy of WFS;

SWST merchandise;

Job info on SWST webpage because there is not much information;

Inactive on-line page of SWST wiki; the respondent indicated that “its popularization as R&D initiatives forum may be helpful”.

It is noted that two SWST services, WFS hard copy and web posting of job opportunities, were mentioned as both helpful and least helpful. There seem to be contradict opinions regarding the

hard copy of WFS but the comments from both sides on job posting does not necessarily contradicts each other.

Curious how it works:

Curious about how the visiting scientist program works.

- e. Newsletter – P. David Jones will be the new Newsletter Editor starting January 1, 2011.
- f. Past Presidents' Council – DSA - Mike Barnes, Fellow – Audrey Zink-Sharp
- g. Policy and Critical Issues – Adam Taylor – Chair. Work has not yet started on the “carbon footprint” white paper, but should start soon. Adam has been in contact with Jim Bowyer to discuss the schedule for completing the paper. The “Need for Hazardous Fuels Reduction on Public Land” and “Advantages of Using Lignocellulosic Biomass Rather than Food Products for Bioenergy” position papers were posted on the SWST website for member comment and have now approved as SWST position statements. No progress has been made on summarizing the SWST National Research Needs Assessment.
- h. Publication Policy - 1. The Committee was charged to initiate the process for a new editor for 2011. Dr. Michael Barnes, Mississippi State University, has accepted the role as editor starting January 2011.  
  
2. The impact of page charge reductions that would result from converting Wood and Fiber Science from print to electronic delivery only is still being determined. This impact needs to be known before making such a change, since the Society does use those page charges for a portion of its operating budget.
- i. Research Initiatives: The committee membership has changed. Adam Taylor is now chair, Jingxin Wang is now vice-chair, New members are Martin Claude Yemele and William Gracitua Ongoing members are Azzeddine Oudjehane, Jingxin Wang, Dave DeVallence , and World Nieh. Ted Wegener is past chair. Thanks are extended to Steve Kelley, Mike Wolcott, Rich Vlosky and Sudipta Dasmohapatra for their service to the committee

Visiting Scientist Program:

Requests were received from 11 students for travel money to the 53<sup>rd</sup> Annual Convention. All 11 students were provided \$500 in travel money. An International Visiting Scientist Award was provided to Dr. Jae-Woo Kim to travel to the University of Natural Resources and Applied Life Sciences in Vienna, Austria. Dr. Kim investigated the nanomechanical properties of wood using nanoindentation. In addition, a survey was sent to all 441 SWST members at the request of the board concerning Wood Scientists Without Borders. Results were published in the Newsletter.

6. Old Business – None
7. Teller's Report - Announced earlier
8. President's Remarks – Sue Anagnost

First, I'd like to thank Jim Funck for his service as SWST President this past year. He has been an effective leader through our transition to the new strategic plan.

Adam Taylor is stepping down as Newsletter Editor. On behalf of the Executive Board and all of the members I'd like to thank Adam for your service for the past 6 years as Newsletter Editor. During this time Adam began sending out the newsletters via email and updated the format for the email platform. We appreciate his professionalism, his contributions at our Board meetings and his willingness to serve. Adam will continue his service to SWST as Chair of the Research Initiatives Committee.

I'm pleased to announce that, in January, David Jones will take over as our new Newsletter Editor.

Frank Beall is stepping down as Editor of Wood and Fiber Science. Frank has been Editor for 4 years. During his term as Editor the journal went through many changes. When Frank took over as Editor the journal was transitioning to electronic format in addition to the paper copy. This involved working with a new system for editing and publication. During his years as service, Frank shortened the time from submission to publication and evaluated and tracked the journal's impact factor compared to similar journals. I'd like to thank Frank for his dedication to the society through his service as Editor.

I'm pleased to announce that Mike Barnes will be the new Editor of Wood and Fiber Science. Mike will work with Frank Beall on the upcoming issues to insure a smooth transition.

I'd like to thank Vicki Herian for her service this past year and in particular all of the work she has done to make a successful annual convention here in Geneva.

I'd like to introduce Dr. Fei from the International Center for Bamboo and Rattan (ICBR) in Beijing, China. Dr Fei is going to tell us about the 2014 SWST Annual Convention which will be held at ICBR.

9. New Business – Dr. Fei from International Centre for Bamboo and Rattan gave a powerpoint presentation about ICBR and their research, as well as about the facilities we will be using for the 2012 International Convention. He welcomed us to Beijing.

A motion was made, seconded and passed to adjourn the meeting at 13:15.

[\(BACK\)](#)

## **ABOUT SWST**

The SWST Newsletter is published six times a year by the Society of Wood Science and

Technology, SWST, P.O. Box 6155 Monona, WI 53716-6155 PH: 608-577-1342 Fax: 608-467-8979.

Items for the Newsletter may be sent to David Jones, at: [pdjones@ext.msstate.edu](mailto:pdjones@ext.msstate.edu)

The Society of Wood Science and Technology is a technical and professional organization for scientists and engineers working in academia, government, consulting and the forest-products industries and is dedicated to providing education and expertise regarding better ways to use and produce wood products.

E-mail: [Vicki@swst.org](mailto:Vicki@swst.org)

Web site: <http://www.swst.org>

*Society of Wood Science and Technology*

President: Susan Anagnost  
Past President: James W. Funck  
President Elect: Todd Shupe  
Vice President: Alain Cloutier  
Executive Director: Vicki L. Herian  
Directors: Steve Quarles (2009)  
Sheldon Shi (2009)  
Susan Diehl (2010)  
Thomas M. Gorman (2010)  
Wood and Fiber Science Editor: Frank Beall  
Newsletter Editor: David Jones

[\(BACK\)](#)

## POTENTIAL SWST VISITING SCIENTISTS

**ACDA, MENANDRO N.**, University of the Philippines Los Banos, Dept. of Forest Products and Paper Science, College, Laguna, Philippines 4031 (+63 49 536 3432) (FAX +63 49 536 3206)  
email: [mnacda@yahoo.com](mailto:mnacda@yahoo.com)

**Specialty:** Termite biology and control.

**Will Discuss Formally and Informally:** Above specialty.

**ANDERSON, MATTHEW**, Wood Advisory Services, Inc. 3700 RT. 44, Suite 102, Millbrook, NY 12545 (845-677-3091) (FAX 845-677-6547) email: [matt@woodadvisory.com](mailto:matt@woodadvisory.com)

**Specialty:** Wood science consulting and applied research.

**Will Discuss Formally and Informally:** Assessment of wood frame buildings (destructive and nondestructive); Evaluations of marine and foundation pilings; Investigation of construction related deficiencies; Microbiological evaluations (wood fungi, mold, bacteria).

**ARMSTRONG, JAMES P.**, Associate Professor, West Virginia University, P.O. Box 6125, Morgantown, WV 26506-6125 (304-293-2941, ext. 2486) (FAX 304-293-2441)

email: jarmstro@wvu.edu

**Specialty:** Wood anatomy and physical properties; Contemporary issues in forest resources and the wood products industry.

**Will Discuss Formally:** Various topics related to forest resources in U.S. history (see: [http://www.wdsc.caf.wvu.edu/otherwebs/wdsc\\_100.htm](http://www.wdsc.caf.wvu.edu/otherwebs/wdsc_100.htm).); Eco-terrorism--Its causes and impacts.

**Will Discuss Informally:** Any of the above; Education in WS&F; The enrollment problem in WS&T.

**BARNES, H. MICHAEL**, Thompson Professor of Wood Science and Technology, Forest Products Laboratory, Mississippi State University, Box 9820, Mississippi State, MS 39762-9820 (662-325-3056) (FAX 662-325-8126) email: mbarnes@cfr.msstate.edu

**Specialty:** Wood deterioration and preservation.

**Will Discuss Formally and Informally:** Wood Treatments, Treatment Mechanics, Wood Deterioration & Preservation and Composite Durability.

**BEALL, FRANK C.**, University of California Berkeley, College of Natural Resources, 1301 South 46th Street, Richmond, CA 94804 (510-665-3536) (FAX 510-665-3427) email: frank.beall@nature.berkeley.edu

**Specialty:** Nondestructive evaluation of wood and wood-based materials.

**Will Discuss Formally:** Ultrasonics for NDE; Future of NDE; Use of project value assessment to evaluate the value of a research project; Program at UCFPL.

**Will Discuss Informally:** All of the above plus most topics in wood physics; Research management; Organization of research papers; The patent process.

**BOWYER, JIM L.**, Director, Responsible Materials Program, Dovetail Partners, Inc., 528 Hennepin Avenue, Suite 202, Minneapolis, MN 55403 and Professor Emeritus, Department of Bioproducts and Biosystems Engineering, University of Minnesota, St. Paul, MN (651-490-7688) (FAX 612-333-0432) email: jimbowyer@comcast.net

**Specialty:** Responsible consumption, environmental implications of biomaterials and bioenergy production and use.

**Will Discuss Formally:** Environmental aspects of forestry, timber harvest and wood use; Environmental life cycle assessment; green building programs; U.S. environmental policy; Responsible consumption; The role of wood in the growing bio-energy industry; environmental education of children; The tropical deforestation problem.

**Will Discuss Informally:** Almost anything.

**BUSH, ROBERT**, Professor, Dept. of Wood Science and Forest Products, Virginia Tech, Blacksburg, VA 20461-0503 (540-231-8834) (FAX 540-231-8868) email: rbush@vt.edu

**Specialty:** Forest products marketing and management

**Will Discuss Formally:** The marketing of forest products in the U.S.; Strategic decision-making in wood-based industries; New forest products marketing research in the U.S. and the United Kingdom.

**Will Discuss Informally:** The above topics in addition to research to help improve student recruitment in Wood Science.

**BRYANT, BEN S.,** 4102-51st Ave., NE, Seattle, WA 98105 (206-522-6273) (FAX 206-522-6273)  
email: fibrobb@hotmail.com

**Specialty:** How we can use the 5 elements of wood science (the mechanical, physical, chemical and biological properties of wood and wood structure and anatomy) to solve problems in wood technology and critically analyze new products as well as new building systems.

**Will Discuss Formally:** in two or more illustrated seminars—for grad students and faculty preferably—with handouts and outlines. These will emphasize the importance of understanding wood anatomy and structure (including the submicroscopic nature of the cell wall).

**Will Discuss Informally:** Will ask students to try to critically analyze, in light of the above, at least 6 “new products” of my own invention and explain why more of them failed than succeeded to reach commercialization. (I’ll show samples of these and/or photographs and diagrams re how I used an understanding of wood science to develop these products. We will also discuss the reasons for failure and/or success of inventions coming from federal laboratories, academic laboratories and industry research departments (including machinery and resin suppliers), and summarize what general lessons can be learned from these case histories.

**CHEN, ZHANGJING, DR.,** 506 Alleghany Street, Blacksburg, VA 24060 (540-231-4962)  
(FAX 540-231-8868) email: chengo@vt.edu

**Specialty:** Wood drying.

**Will Discuss Formally and Informally:** Above specialty.

**CHOW, POO,** 2406 Burlison Drive, Urbana, IL 61801 (217-333-6670) (FAX 217-244-3219)  
email: pchow@uiuc.edu

**Specialty:** Physical, mechanical and chemical properties of wood-based materials.

**Will Discuss Formally:** Hardwood composites; Durability of wood for structural uses.

**Will Discuss Informally:** Durability of wood-base materials; Utilization of non-wood plant fiber.

**COOPER, PAUL,** Associate Professor, Forestry Department, University of Toronto,  
33 Willcocks Street, Toronto, Ontario, CANADA M5S 3B3 email: p.cooper@utoronto.ca

**Specialty:** Wood deterioration and protection.

**Will Discuss Formally:** Interaction with chemicals with the wood cell wall; CCA fixation;  
Environmental impacts of treated wood over the full life cycle; Recycling/reuse of treated wood.

**Will Discuss Informally:** Collaborative research; Graduate student recruitment;  
Teaching methods.

**CUTTER, BRUCE,** Associate Professor, University of Missouri, 124 A-BNR, Columbia, MO 65211  
(573-882-5191) (FAX 573-884-2636) email: cutterb@missouri.edu

**Specialty:** Tree growth, wood quality.

**Will Discuss Formally:** Eastern red cedar as a biogeochemical monitor; General tree growth;  
Wood quality; Agroforestry.



**Will Discuss Informally:** Eastern red cedar as a biogeochemical monitor; General tree growth; Wood quality; Behavior of wood in fire situations.

**DeBONIS, A. L.**, President, Wood Advisory Services, Inc., P.O. Box 1322, Millbrook, NY 12545 (914-677-3091) (FAX 914-677-6547) email: ald@woodadvisory.com

**Specialty:** Wood engineering.

**Will Discuss Formally and Informally:** Design properties of lumber; Grading of structural lumber (visual and/or MSR); Reliability-based design; The role of consultants in the forest products field; Heavy timbers in residential and commercial construction; Hardwood structural lumber.

**DOLAN, J. DANIEL, Dr.**, Professor, Washington State University, P.O. Box 642910, Pullman, WA 99164-2910 (509-335-7849) (FAX 509-335-7632) email: jddolan@wsu.edu

**Specialty:** Timber engineering; Structural performance; Wood mechanics; Connections.

**Will Discuss Formally and Informally:** All specialties.

**FLYNN, KEVIN**, Flynn & Associates, Wood Science & Technology, P.O. Box 805, El Cerrito, CA 94530 (510-758-4686) (FAX 510-758-4893) email: k\_flynn@sbcglobal.net

**Specialty:** Wood performance; Problem analysis.

**Will Discuss Formally:** Durability; Degradation; Protection.

**Will Discuss Informally:** Any related issues.

**FUNCK, JAMES W.**, Manager, Lumber & Wood Science, Weyerhaeuser Company, WTC 2B2, P.O. Box 9777, Federal Way, WA 98063-9777 (253-924-6826) (FAX 253-924-4239) email: jim.funck@weyerhaeuser.com

**Specialty:** Optical and dielectric scanning for surface defects and roughness; Process modeling and simulation (lumber and plywood); Process control.

**Will Discuss Formally:** Above listed specialties.

**Will Discuss Informally:** Above listed specialties; Education - graduate and undergraduate.

**GARDNER, DOUGLAS J.**, University of Maine, 208 AEWB Building, Orono, ME 04469 (207-581-2846) (FAX 207-581-2074) email: douglas.gardner@umit.maine.edu

**Specialty:** Wood adhesion; Wood composites.

**Will Discuss Formally:** Wood adhesion; Wood surface chemistry; Wood/plastic composites.

**Will Discuss Informally:** Anything.

**GLASSER, WOLFGANG G.**, Professor of Wood Chemistry, Virginia Polytechnic Institute and State University, Department of Wood Science & Forest Products, 210 Cheatham Hall, Blacksburg, VA 24061 (540-231-4403) (FAX 540-231-7664) email: wglasser@vt.edu

**Specialty:** Polymer and materials science aspects of forest products; Biobased materials from wood; Steam explosion.

**Will Discuss Formally:** Structure--property relationships of cellulose, xylan and lignin and their derivatives; Cellulosic thermoplastic polymers and composites; Lignin chemistry.

**Will Discuss Informally:** The Carbohydrate Economy: Technical, economic social .

**GOODELL, BARRY, Ph.D.**, University of Maine, Wood Science and Technology Dept., 5755 Nutting

Hall, Orono, ME 04469-5755 (207-581-2888) email: goodell@umit.maine.edu

**Specialty:** Biodeterioration; Bioprocessing and bioconversion of wood.; Nanotechnology: Producing carbon nanotubes from wood; Biocomposites and polymer matrix composites: ComPRIS.

**Will Discuss Formally:** Any of the above topics as well as an overview of Wood Utilization Research (WUR) Center activities at the University of Maine or nationally.

**Will Discuss Informally:** Any of the above. See <http://woodscience.umaine.edu/goodell/> for more information on my research, or <http://www.woodutilization.org> for information on WUR.

**GUPTA, RAKESH.**, Oregon State University, Department of Wood Science & Engineering, 114 RH, Corvallis, OR 97331 (541-737-4223) (FAX 541-737-3305)  
email: rakesh.gupta@oregonstate.edu

**Specialty:** Wood engineering/Mechanics; Mechanical properties/behavior of wood.

**Will Discuss Formally:** Above listed specialties.

**Will Discuss Informally:** Above listed specialties.

**IFJU, GEZA**, Department of Wood Science & Forest Products, Virginia Polytechnic and State University, 210 Cheatham Hall, Blacksburg, VA 24060-0323 (540-231-8215)  
(FAX 540-231-8868) email: ifju@vt.edu

**Specialty:** Quantitative wood anatomy; Structure-property relationships.

**Will Discuss Formally and Informally:** Above specialty.

**JAGELS, RICHARD**, Professor, Department of Forest Ecosystem Science, University of Maine, 5755 Nutting Hall, Orono, ME 04469 (207-581-2884) (FAX 207-581-2889)  
email: Richard.Jagels@maine.edu

**Specialty:** Wood structure; Wood quality.

**Will Discuss Formally:** Morphometric analysis applied to wood structure and wood quality studies; Wood analysis of wetsite archaeological finds.

**Will Discuss Informally:** Environmental influences on wood production and wood quality; Conservation of waterlogged wood; Technology transfer; Health hazards of wood.

**JELLISON, JODY**, Professor of Biology, University of Maine, 313 Hitchner Hall, Orono, ME 04469 (207-581-2995) (FAX 207-581-2969) email: jellison@umit.maine.edu

**Specialty:** Biodegradation of wood; Fungal metabolism.

**Will Discuss Formally:** Biological degradation of wood.

**Will Discuss Informally:** Interdisciplinary studies.

**KAMKE, FREDERICK A.**, Endowed Chair-JELD-WEN, Oregon State University, Dept. Wood Science & Engineering, 104 Richardson Hall, Corvallis, OR 97331 (541-737-8422)  
(FAX 541-737-3385) email: fred.kamke@oregonstate.edu

**Specialty:** Wood physics and composites.

**Will Discuss Formally:** Rotary dryers; Heat and mass transfer during flakeboard manufacture; Viscoelastic behavior of wood.

**Will Discuss Informally:** Heat and mass transfer in wood and wood products

**KIM, MOON J.,** Department of Forest Products, Mississippi State University, Mississippi State, MS 39762-9820 (662-325-3109) (FAX 662-325-8126)  
email: mkim@cfr.msstate.edu

**Specialty:** Wood Adhesives; UF resins; PF resins, PRF resins.

**Will Discuss Formally and Informally:** Above specialty.

**KLINE, D. EARL,** Assistant Professor, Virginia Polytechnic Institute and State University, Department of Wood Science and Forest Products, 210 Cheatham Hall, Blacksburg, VA 24061-0323 (540-231-8841) (FAX 540-231-8868) email: kline@vt.edu

**Specialty:** Industrial systems engineering of wood products processing and manufacturing; Operations research; Process control and automation.

**Will Discuss Formally:** Computer simulation and optimization methods; Machine vision applications in wood products processing; Artificial Intelligence applications in wood science.

**Will Discuss Informally:** Any of the above; Computer spreadsheet development for quality control and process control; Computer programming.

**LACHENBRUCH, BARBARA,** Associate Professor, Oregon State University, Dept. of Forest Products, 118 Richardson Hall, Corvallis, OR 97331 (541-737-4213) (FAX 541-737-3385)  
email: barb.lachenbruch@oregonstate.edu

**Specialty:** Wood quality/silviculture interactions; Tree physiology.

**Will Discuss Formally:** Effects of tree biology on wood quality; Tree water relations and biomechanics as related to xylem structure.

**Will Discuss Informally:** Dual-career, women and family issues in grad school and academics.

**LAMB, FRED M.,** Fred Lamb Consulting, Inc., 325 Tomahawk Drive, Christiansburg, VA 24073 (540-231-7256) (FAX 540-231-8868) email: fml195@vt.edu

**Specialty:** Wood processing; Furniture manufacturing processes.

**Will Discuss Formally:** Furniture manufacturing technology; Industrial noise; Wood machining (Theory and Industrial Practices); Technology transfer (Theoretical Models and Current Practices).

**Will Discuss Informally:** Same as above; Lumber drying and wood deterioration.

**LITTLE, ROBERT L.,** Armstrong Wood Products, 498 Salt Street, Winston-Salem, NC 27101 (336-406-1746) (FAX 336-703-1808) email: r\_little@bellsouth.net

**Specialty:** Drying of hardwood lumber.

**Will Discuss Formally:** Automated control of hardwood dry kilns, Control of corrosion in dry kiln buildings, General drying practices for hardwood lumber, and Kiln design considerations.

**Will Discuss Informally:** General wood technology.

**LOFERSKI, JOSEPH R.,** Associate Professor, Virginia Polytechnic Institute and State

University, Department of Wood Science and Forest Products, Brooks Forest Products Center, Blacksburg, VA 24061-0503 (540-231-4405) (FAX 540-231-8868)  
email: jloferski@vt.edu

**Specialty:** Wood engineering, Design of wood structures, Long-term performance of buildings, Historic buildings

**Will Discuss Formally or Informally:** Preservation of historic wood structures; Long-term performance of wood structures; Building systems; Deterioration of wood building materials.

**MALONEY, THOMAS M.**, Retired, Washington State University, Pullman, WA 99164-1806 (509-335-4916) (FAX 509-335-5077) email: tmaloney@pullman.com

**Specialty:** Composition and composite wood products.

**Will Discuss Formally and Informally:** Any aspect of particleboard, flakeboard, fiberboard, and composites; The board industry in other parts of the world.

**MARRA, ALAN**, Professor (retired, University of Massachusetts), 444 Old Montague Road, Amherst, MA 01002 (413-549-6910).

**Specialty:** Wood gluing; Reconstituted products.

**Will Discuss Formally:** Wood technology in the forest enterprise; Technology in the glue line.

**Will Discuss Informally:** R&D in WS&T; Fiddling with education.

**McLAIN, THOMAS E.**, Professor of Timber Engineering and Department Head, Oregon State University, 119 Richardson Hall, Corvallis, OR 97331-5751 (541-737-4257) (FAX 541-737-3385) email: Thomas.McLain.oregonstate.edu

**Specialty:** Engineering properties of wood and wood-based materials; Design of wood structures; Structural mechanical connections; Role of wood in modern society; Forest products/wood science academic, extension and research program administration.

**Will Discuss Formally:** Why Wood Engineering? The role of wood in modern society; Integrating extension in research and teaching; Pacific Northwest forest conflicts.

**Will Discuss Informally:** Above topics and most anything else.

**MORRELL, JEFFREY J.**, Professor, Department of Forest Products, 230 Richardson Hall, Oregon State University, Corvallis, OR 97331-5751 (541-737-4222) (FAX 541-737-3385) email: Jeff.Morrell@oregonstate.edu

**Specialty:** Wood microbiology; Biodeterioration; Preservation.

**Will Discuss Formally:** Remedial control of decay in wood structures; Proper use of wood in adverse environments; OSU's cooperative pole research program.

**Will Discuss Informally:** Biodeterioration and biological interactions; Treatability of refractory wood species.

**O'HALLORAN, MICHAEL R.**, President, Western Wood Products Association, 522 SW 5th Street, Suite 500, Portland, OR 97204-2122 (503-224-3930) (FAX 503-224-3934) email: mohalloran@wwpa.org

**Specialty:** Wood engineering, mechanics, wood structures, codes, standards, research management.

**Will Discuss Formally:** Structural panel industry (Plywood, OSB, waferboard) status, markets, uses, standards, engineering design, LRFD design; Glued laminated timber; Structural composite lumber.

**Will Discuss Informally:** Trade associations; Structural panel topics; International markets; above topics.

**PARIDAH, MD. TAHIR.,** Associate Professor Dr., Universiti Putra Malaysia, Institute of Tropical Forestry and Forest Products, Serdang, Selangor, MALAYSIA 43400 (608-89472186) (FAX 608-89472180) email: parida\_introb@yahoo.com

**Specialty:** Bonding of tropical wood and non-wood materials; Kenaf as raw material for composite products.

**Will Discuss Formally:** On MOU between UPM and host University: 1) establish student exchange program; 2) R&D collaboration..

**Will Discuss Informally:** Post graduate studies at UPM.

**SHALER, STEPHEN,** Professor, University of Maine, 5755 Nutting Hall, Orono, ME 04469-5755 (207-581-2886) (FAX 207-581-2875) email: Steve.Shaler@umit.maine.edu

**Specialty:** Wood mechanics and composites.

**Will Discuss Formally:** Wood fiber properties; Computer and imaging applications; Experimental mechanics.

**Will Discuss Informally:** Hybrid wood composites.

**SHI, SHELDON QIANG ,** Mississippi State University, Forest Products Department, Box 9820, Mississippi State, MS 39762-9820 (662-325-3110) (FAX 662-325-8126) email: sshi@cfr.msstate.edu

**Specialty:** Wood (Wood-plastics) composites, wood adhesion, moisture related properties of wood and wood composites.

**Will Discuss Formally:** Recycling of polymer fluff in wood composites; Contact angle determination of particles.

**Will Discuss Informally:** Moisture related properties of wood composites; Student recruitment issue.

**SMITH, BOB,** Associate Professor/Extension Specialist, Virginia Tech, 1650 Ramble Road, Mailcode 0503, Blacksburg, VA 24061 (540-231-9759) (FAX 540-231-8868) email: rsmith4@vt.edu

**Specialty:** Forest products marketing; Professional sales in the forest products industry; Markets for wood in the U.S. infrastructure; Markets and perceptions of timber by engineers.

**Will Discuss Formally:** Marketing forest production; Perceptions of wood in the U.S. infrastructure; Educational needs in the forest products industry.

**Will Discuss Informally:** Timber bridges; Wood science and forest products at VPI; The Center for Forest Products Marketing and Management.

**SMITH, W. RAMSAY,** Arch Wood Protection, Inc., 3941 Bonsal Road, Conley, GA 30288 (404-362-3970) (FAX 404-363-8585) email: wrsmith@archchemicals.com

**Specialty:** International trade in forest products; Hardwood exports; Wood quality influences on product acceptance in foreign markets.

**Will Discuss Informally:** Graduate programs in wood science and in international trade; Views of the future of the forest products industry; other topics as desired.

**SMULSKI, STEPHEN, Ph.D.,** President, Wood Science Specialists, Inc., 453 Wendell Rd., Shutesbury, MA 01072 (413-259-1661) (FAX 413-259-1610) email: woodsci@crocker.com

**Specialty:** In-service performance of wood and wood-base products in residential, commercial and industrial construction; Preventing degradation of wood in service.

**Will Discuss Formally:** Moisture problems and durability of wood-frame houses; Forensic application of wood science and technology

**Will Discuss Informally:** Consulting opportunities in wood science and technology; Career opportunities in wood science and technology.

**STOKKE, DOUGLAS D.,** Assistant Professor, Iowa State University, Dept. of Nat. Res. Eco. & Mgt., 339 Science II, Ames, IA 50011-3221 (515-294-2115) (FAX 515-294-2995) email: dstokke@iastate.edu

**Specialty:** Wood structure and properties, wood quality, light and electron microscopy.

**Will Discuss Formally:** Wood micro- and ultrastructure; Applications of microscopy to wood products research; Birdseye maple; Color analyses of wood products; SWST international visitation trip to China.

**Will Discuss Informally:** Microstructure of wood and polymer composites; Education in wood science and technology.

**SUN, DR. RUN-CANG,** Beijing Forestry University, College of Material Science and Technology, Beijing, CHINA 100083 email: rcsun3@bjfu.edu.cn

**Specialty:** Straw/wood fiber chemistry.

**Will Discuss Formally and Informally:** Utilization of straw fiber as novel materials for industries.

**TANG, R. C.,** Professor, School of Forestry, Auburn University, Auburn, AL 36849-5418 (334-844-1088) (FAX 334-844-4221) email: tangrc@auburn.edu

**Specialty:** Mechanics and physics of wood and wood composites.

**Will Discuss Formally:** Long-term performance of wood composite structures; Creep models of wood composites under various environmental conditions; Elastic behavior of wood fibers; Dimensional stability and engineering reliability of wood composite structures; Duration of load behavior of lumber under changing environments; Effect of flake-cutting pattern and resin content on the mechanical and physical properties of flakeboard.

**Will Discuss Informally:** Undergraduate and graduate programs in forest products and wood science at Auburn; Mathematical models and simulation in forest and wood science.

**TEKLEYOHANNES, Anteneh Tesfaye,** University of British Columbia, Dept. of Wood Science, 2424 Main Mall, Vancouver, BC, CANADA V6T 1Z4 (604-822-8203) (FAX 604-822-9195) email: anteneht@interchange.ubc.ca

**Specialty:** Wood products engineering--basic wood processing, Sawmilling; Drying and preservation; Composite materials and furniture.

**Will Discuss Formally:** Environmental aspects of wood products.

**TICHY, ROBERT J.**, President, TM & I, 27013 Pacific Highway S, #179, Des Moines, WA 98198 (253-529-0900) (FAX 253-529-1326) email: bobtichy@msn.com

**Will Discuss Formally:** Nonresidential construction; Load and resistance factor design; Structural composites.

**Will Discuss Informally:** Above topics. Total quality concepts in R&D; Product and market development.

**VLOSKY, RICHARD P.**, Director & Professor of Forest Products Marketing, Louisiana State University, LA Forest Products Development Center, School of Renewable Nat. Res., Baton Rouge, LA 70803-6202 (225-578-4527) (FAX 225-578-4251) email: [vlosky@lsu.edu](mailto:vlosky@lsu.edu); website: [www.rnr.lsu.edu/lfpdc](http://www.rnr.lsu.edu/lfpdc)

Specialties: Forest Products Marketing; Forest-sector Business and Economic development; eBusiness; Certification; International Marketing Development. Will Discuss all specialties formally or informally

**WANG, XIPING**, USDA Forest Service, Forest Products Laboratory, 1 Gifford Pinchot Drive, Madison, WI 53726-2398 (608-231-9461) (FAX 608-231-9508) email: xwang@fs.fed.us

**Specialty:** Nondestructive evaluation (NDE) of wood; NDE of wood structural members/systems; Wood drying.

**Will Discuss Formally:** NDE of trees, logs, lumber; NDE of structural members/systems.

**Will Discuss Informally:** Dry kiln control.

**WIEDENBECK, JANICE K.**, Project Leader, USDA Forest Service, Northeastern Forest Experiment Station, 241 Mercer Springs Road, Princeton, WV 24740 (304-431-2708)

(FAX 304-431-2772) email: [jwiedenbeck@fs.fed.us](mailto:jwiedenbeck@fs.fed.us)

**Specialty:** Secondary wood products processing; Manufacturing system simulation modeling; Production control.

**Will Discuss Formally:** Research pursuits and accomplishments of Princeton WV's work unit "Improved Processing Technology for Hardwoods" including gang-rip-first research and application programs; Rough mill simulation models; Yield improvement research; New hardwood lumber processing systems and technologies, etc.

**WINANDY, JERROLD**, 9227 Katzenbuechel Road, Mazomanie, WI 53560 (608-231-9316) (FAX 608-231-9582) email: [jwinandy@wisc.edu](mailto:jwinandy@wisc.edu)

**Specialty:** Engineered wood composites; Durability; Composites as tool for sustainable forestry.

**Will Discuss Formally:** Composites; Preservation; Property effects; Enhancing durability.

**Will Discuss Informally:** Standards; Codes; Physical/mechanical properties.

**WILCOX, W. WAYNE**, 4830 Faber Road, Shingle Springs, CA 95682 (530-677-2280) email: [wayne@wwwilcox.biz](mailto:wayne@wwwilcox.biz)

**Specialty:** Wood biodeterioration; Microscopical diagnosis of decay.

**Will Discuss Formally:** Nature and biology of wood decay; Wood-inhabiting fungi; Decay in wood structures due to design and construction deficiencies; Hawaii and pest control.

**Will Discuss Informally:** Teaching wood performance to architecture students.

**YAN, NING**, Assistant Professor, University of Toronto, Faculty of Forestry, 33 Wilcocks St., Toronto, Ontario CANADA M5S 3B3 (416-946-8070) (FAX 416-978-3834)

email: ning.yan@utoronto.ca

**Specialty:** Material science.

**Will Discuss Formally:** Wood composites performance; Adhesive-wood interactions; Wood/natural fiber plastic composites; Pulp and paper.

**Will Discuss Informally:** Durability and weathering of forest products.

**ZERBE, JOHN I.**, 3310 Heatherdell Lane, Madison, WI 53713 (608-274-0714)

email: jzerbe@fs.fed.us

**Specialty:** Wood as a source of energy and petrochemical substitutes; Use of wood to combat global climate change.

**Will Discuss Formally:** Conversion of wood to improved fuels; Wood as a raw material for alcohol production; Reduction of atmospheric carbon dioxide through wood utilization by conservation, sequestration and substitution.

**Will Discuss Informally:** History of the forest resource as a source of fuel; Current thinking on wood as a source of energy; Impact of energy usage on the future of our economy; Impacts of atmospheric carbon dioxide increase.