



Yu-San TSENG

**IUFRO Division 5 Conference**  
**5.14.00 Forest Products Education**





Ya-Nan WANG,(Director, EF of NTU)

Yu-San TSENG,(Speaker)\*

Chung-Ming CHEN

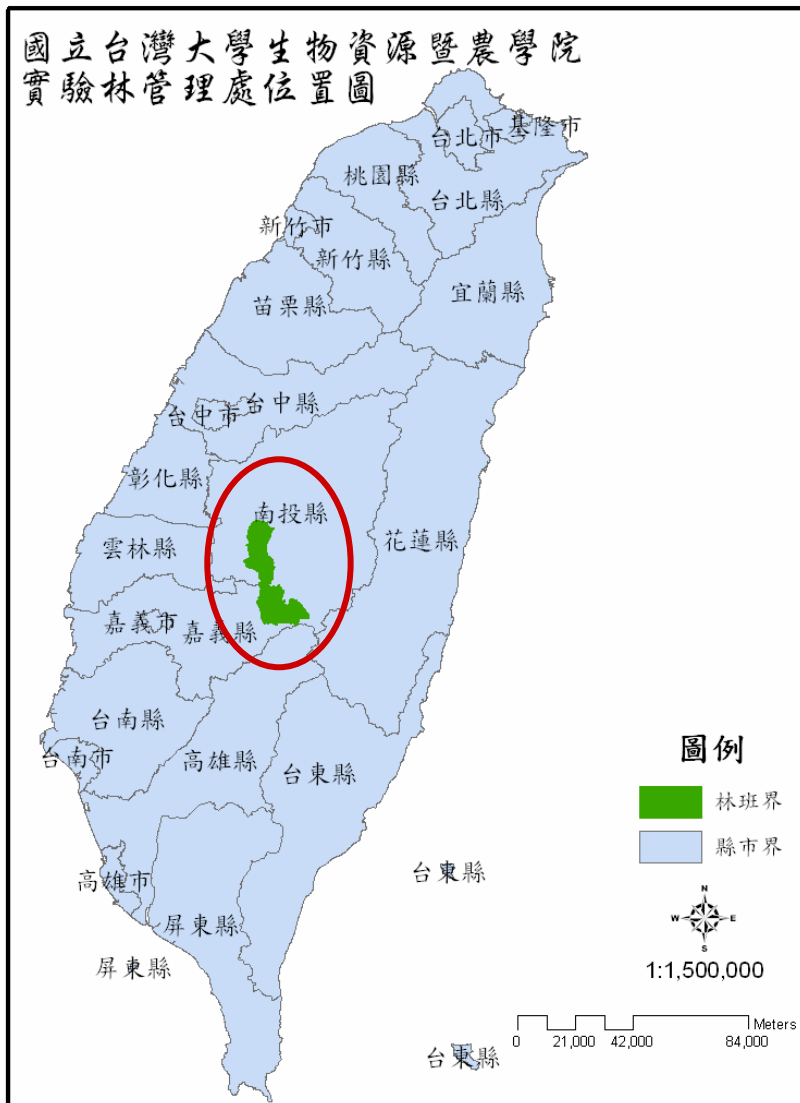
Li-Chen LIN

Far-Ching LIN (Corresponding Author)

# Extension Education in Forest Products in The Experimental Forest of National Taiwan University

Administration of Experimental Forest  
National Taiwan University  
#12, Sec.1, Chien Shan Rd.  
557 Nantou County  
Taiwan

# Location & Area



➔ The Experimental Forest with 32,782 ha is located in the mountains of central Taiwan

⌚ According to topography and manageability, the Experimental Forest is divided into 6 Tracts

Cingshueigou Tract  
Area: 3,886 ha

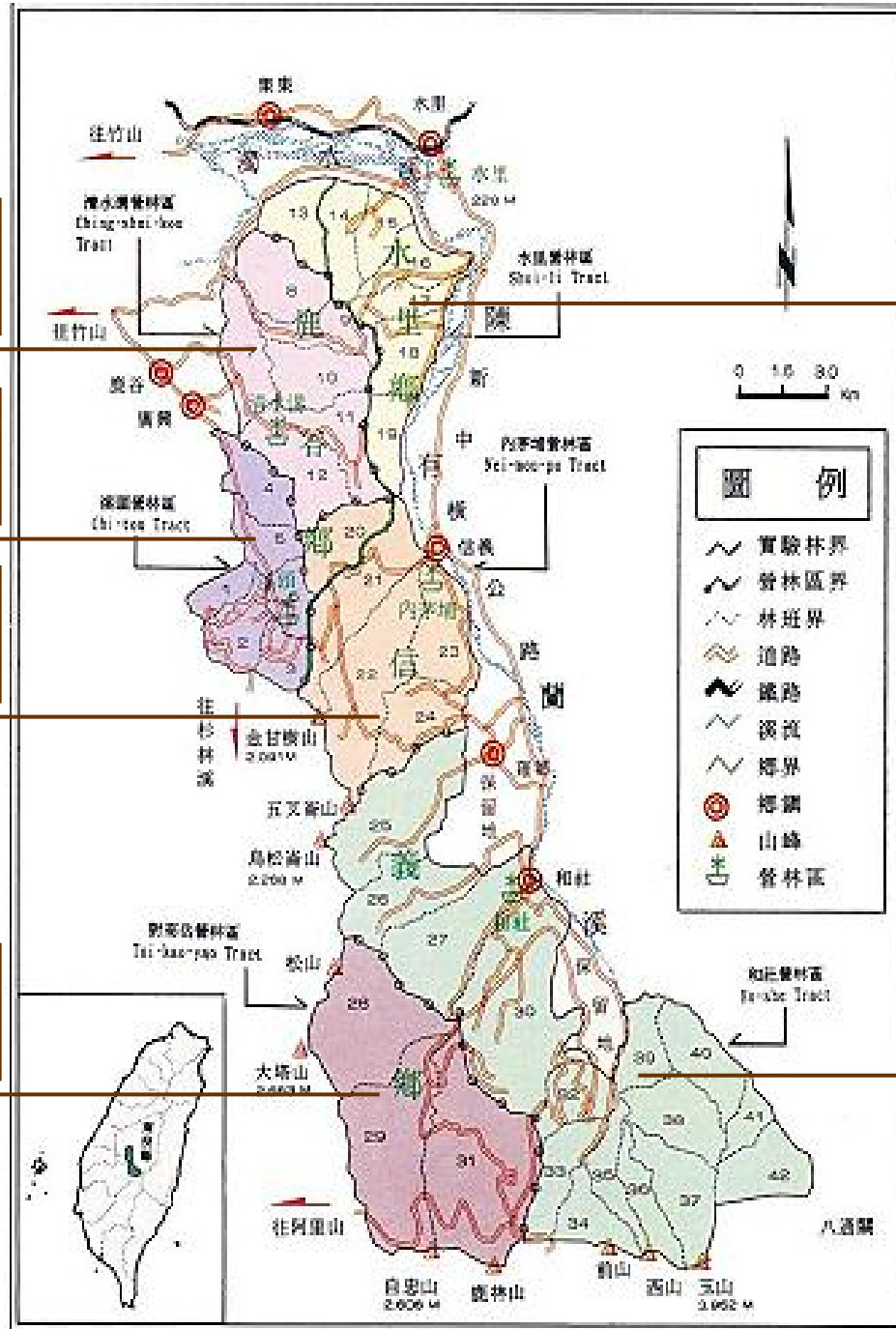
Sitou Tract  
Area: 2,349 ha

Neimaupu Tract  
Area: 4,796 ha

Dueigaoyue Tract  
Area: 5,869 ha

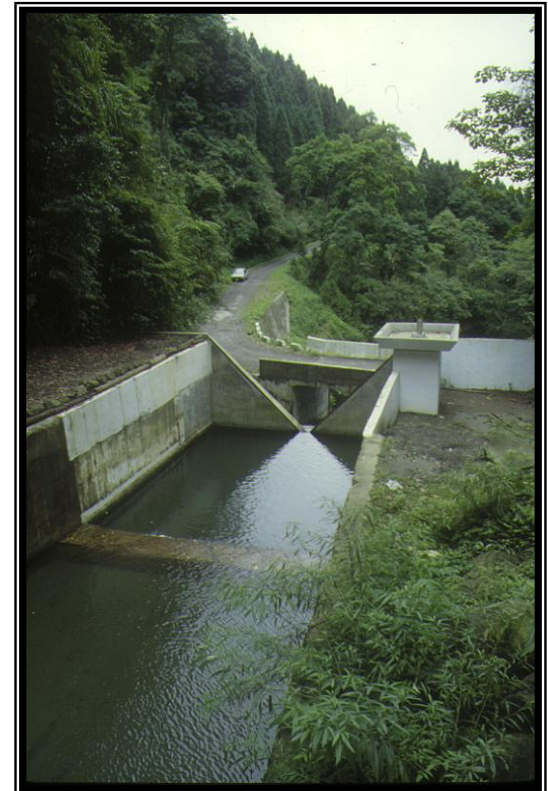
Shueili Tract  
Area: 3,321 ha

Heshe Tract  
Area: 12,531 ha



# Missions

**Education**  
**Research**  
**Forest management**  
**Environmental conservation**





# Change of forest management

Reasons :

- Depletion the wood resource
- Raising of forest conservation issues

Solutions :

- Appropriate utilization of forest products
- Sustainable, and high value-added.
- Combination of environmental education with the recreation industry

# Four Extension Education in Forest Products

- Do-it-yourself wood working
- Utilization of bamboo charcoal
- Hand made paper
- Extraction of essential oil



# 1. Do-it-yourself wood working(1) Explanation & Demonstration





# 1. Do-it-yourself wood working(2) Assemble



# 1. Do-it-yourself wood working(3) Sanding & Painting



# 1. Do-it-yourself wood working(4) Final work



## 2. Utilization of bamboo charcoal(1) Carbonized raw bamboo cup



## 2. Utilization of bamboo charcoal(2) Explanation



## 2. Utilization of bamboo charcoal(3) Affix coloring tissue paper



## 2. Utilization of bamboo charcoal(4) Final work



# 3. Hand made paper(1)

## Paper Formation





# 3. Hand made paper(2) Peeling paper mat & Dehydration



### 3. Hand made paper(3) Drying by furnace



### 3. Hand made paper(4) Drying in air & Final work



# 4. Extraction of essential oil(1) Facility



## 4. Extraction of essential oil(2) Explanation



## 4. Extraction of essential oil(3) Extraction from leaves



## 4. Extraction of essential oil(4) Add essential oil to soap



## 4. Extraction of essential oil(5) Final work - aromatic soap





# Propagation of conservation concepts & forest policies

- Utilization of plantation wood
- Carbon sequestration
- Reduction of carbon dioxide emissions
- Appropriate utilization of bamboo
- Medical utilization of wood extracts.



# Conclusion

- Establish well known reputation
- People learned update information of forestry
- Understand the efforts of forest authorities
- Increasing the revenues of recreational area.





Thank you for you attension.