



**51st International Annual  
Convention  
Society of Wood Science and  
Technology  
November 11, 2008**

**Universidad del Bío-Bío  
Auditorium  
Concepción, Chile**



# **SWST 2008 Awards Presentation**



**George G. Marra Award  
for  
Excellence in Writing**



# **Honorable Mention**

**Erin N. Anderson, Robert J. Leichti,  
Edward G. Sutt, Jr., and David V. Rosowsky**

**“Sheathing Nail Bending-Yield Stress:  
Effect on Cyclic Performance of Wood  
Shear Walls”**

**Volume 39, No. 4, pp. 536-547**



# **Second Place**

**Lori Elkins, Jeffrey J. Morrell, and  
Robert J. Leichti**

**“Establishing a Through-boring Pattern for  
Utility Poles”**

**Volume 39, No. 4, pp. 639-650**



# First Place

**Russell J. Chedgy, Paul I. Morris,  
Young Woon Lim, and Colette Breuil**

**“Black Stain of Western Red Cedar (*Thuja plicata* Donn) by *Aureobasidium pullulans*:  
The Role of Weathering”**

**Volume 39, No. 3, pp. 472-481**



# 2008 Student Poster Competition Participants

**Oluwatosin Emmanuel Adedipe**, “Prediction of Yellow-Poplar (*Liriodendron tulipifera*) Veneer Stiffness and Bulk Density Using Near Infrared Spectroscopy and Multivariate Calibration”

**Tobias Biechele**, “Growth Stress in *Eucalyptus Nitens* at Different Stages of Development”

**Daniel Fuentealba**, “Characterization of Birch (*Betula papyrifera* Marsh.) Wood Discoloration During Drying”

**Victor Gaete-Martinez**, “Effect of Strand Geometrical Distribution (SGD) in Oriented Strand Composite (OSC) Formation Quality”



# 2008 Student Poster Competition Participants

**Zanin Kavazović,** “Sensitivity Study of a Numerical Model of Heat and Mass Transfer Involved During the MDF Hot Pressing Process”

**Maria Manso Martin,** “Wood properties of *Nothofagus betuloides*”

**Sandeep S. Nair,** “Evaluation of Interphase Properties In Fiber Reinforced Polymer Composite Using Contact Resonance Force Microscopy”

**Denny Ohnesorge,** “Influence of Different Gluing Factors on the Bonding Performance of Glued Laminated Timber made from European Beech”

**Gloria S. Oporto,** “Wood Plastic Composites Manufactured from Hot Water Extracted Wood. Part 1: Mechanical Evaluation”





# 2008 Student Poster

## Competition Winners

1<sup>st</sup> Place – Gloria Oporto

2<sup>nd</sup> Place – Sandeep Nair

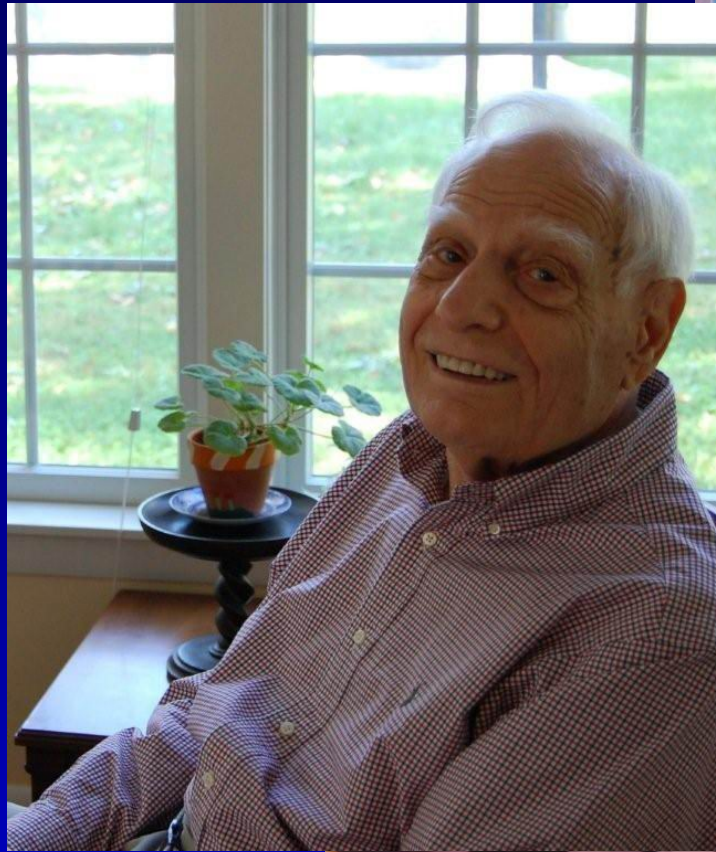
3<sup>rd</sup> Place – Zanin Kavazovic



# 2008 Fellow Award Recipient

**Robert W. Rice**





**Alan A. Marra**

**2008 SWST  
Distinguished  
Service Award  
Recipient**





# FISCAL STATUS DECEMBER 31, 2007

## BALANCE SHEET

Total Assets	\$303,889.53
Total Liabilities	\$ 28,882.20
Total Equity	\$275,007.33
Total Equity & Liabilities	\$303,889.53

## INCOME STATEMENT

	<u>2007 Budget</u>	<u>Actual 2007</u>
Total Income	\$163,450.00	\$185,132.18
Total Expenses	<u>\$148,127.00</u>	<u>\$196,146.38</u>
Budget Reserves	\$ 15,323.00	(\$ -11,014.20)

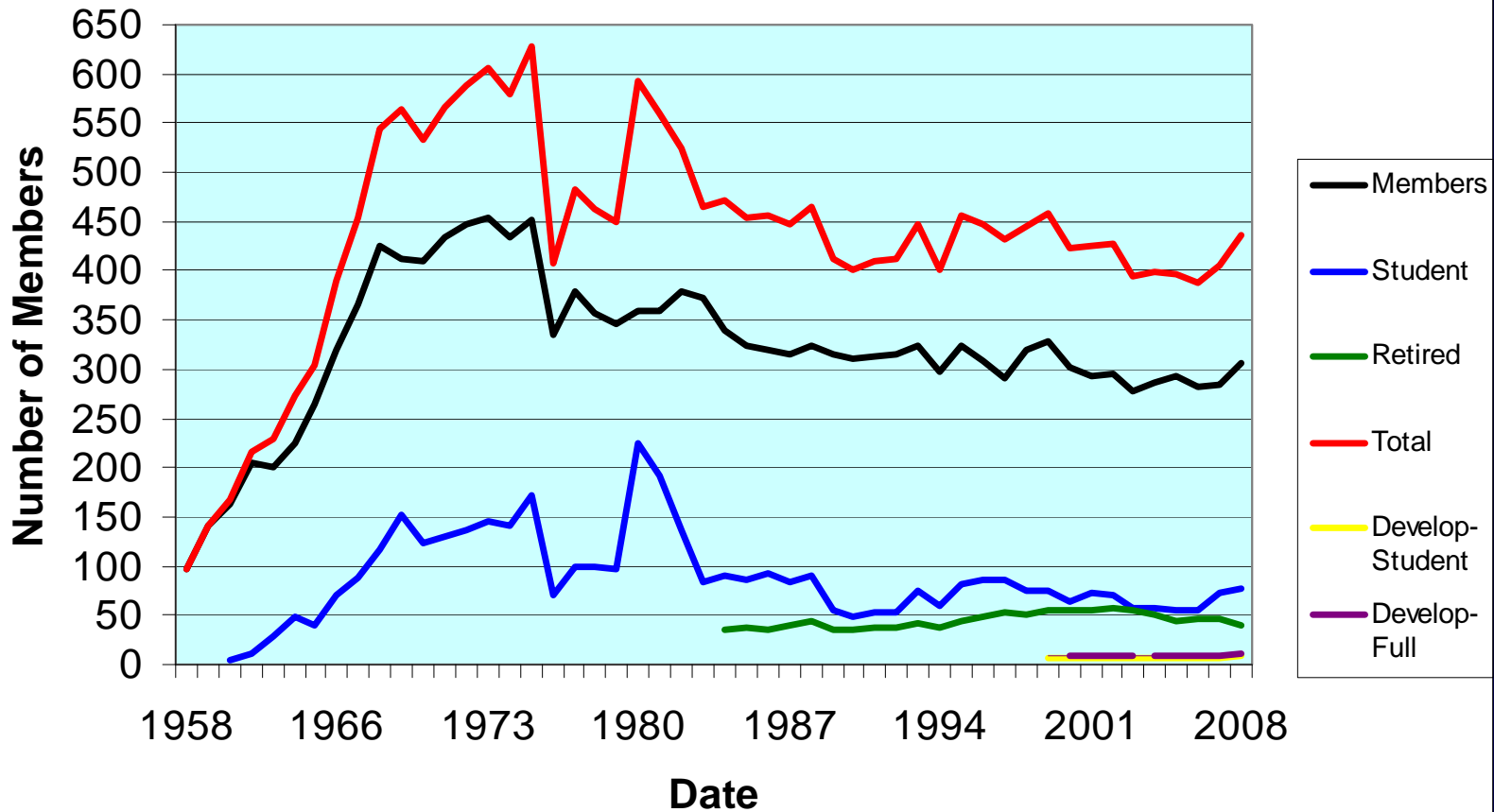


# 2009 SWST Budget

<u>Category</u>	<u>Income</u>	<u>Expenses</u>	<u>Net</u>
W&FS	\$122,700	\$ 75,180	\$47,520
Dues	\$ 26,725		\$26,725
Interest	\$ 200		\$ 200
Member Services	\$ 12,900	\$ 38,150	\$(25,250)
Admin Services		\$ 17,450	\$(17,450)
Salary & Taxes		\$ 13,900	\$(13,900)
<b>TOTAL</b>	<b>\$162,525</b>	<b>\$144,680</b>	<b>\$ 17,845</b>



## SWST Membership History





Subscribers

